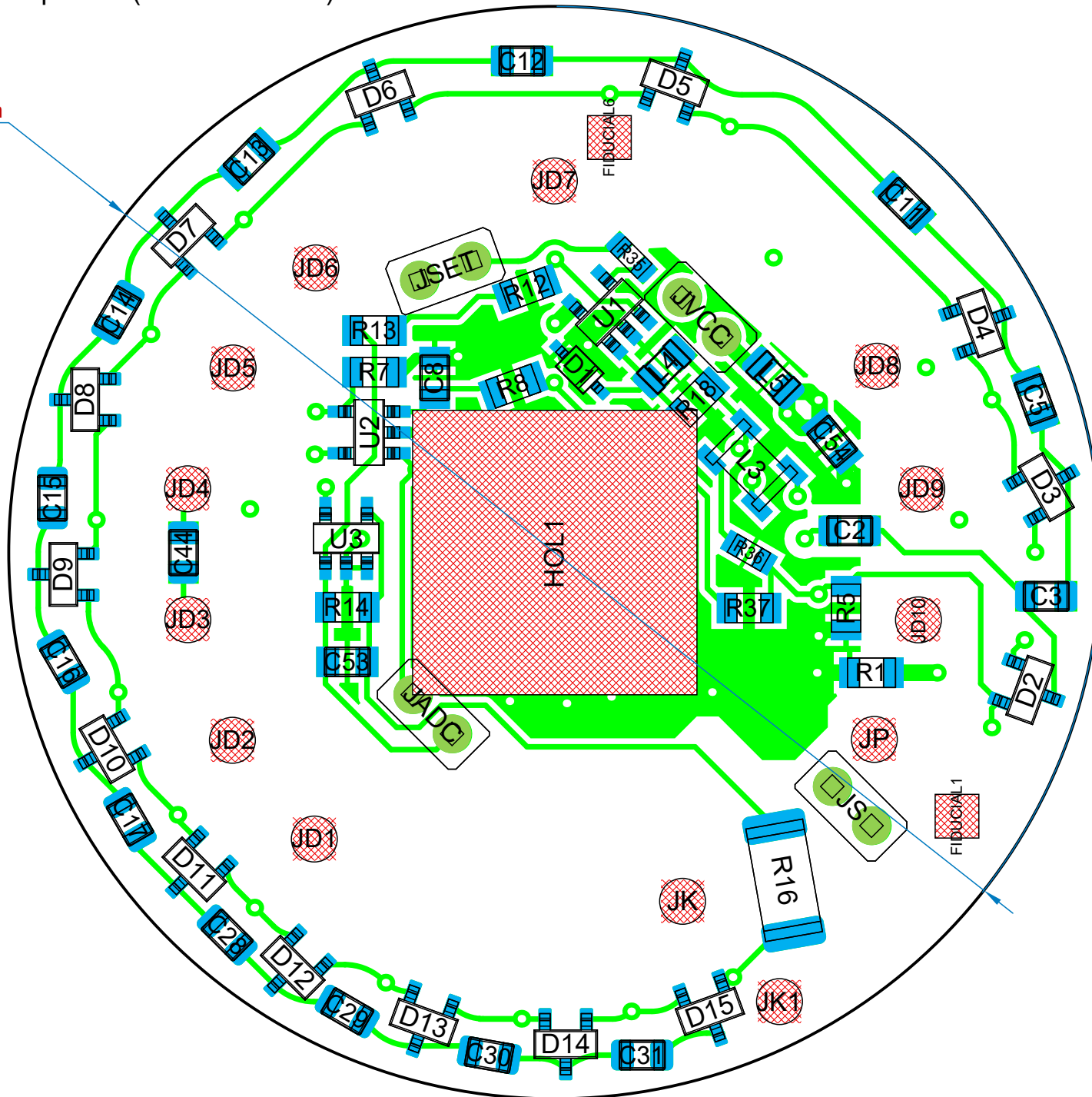
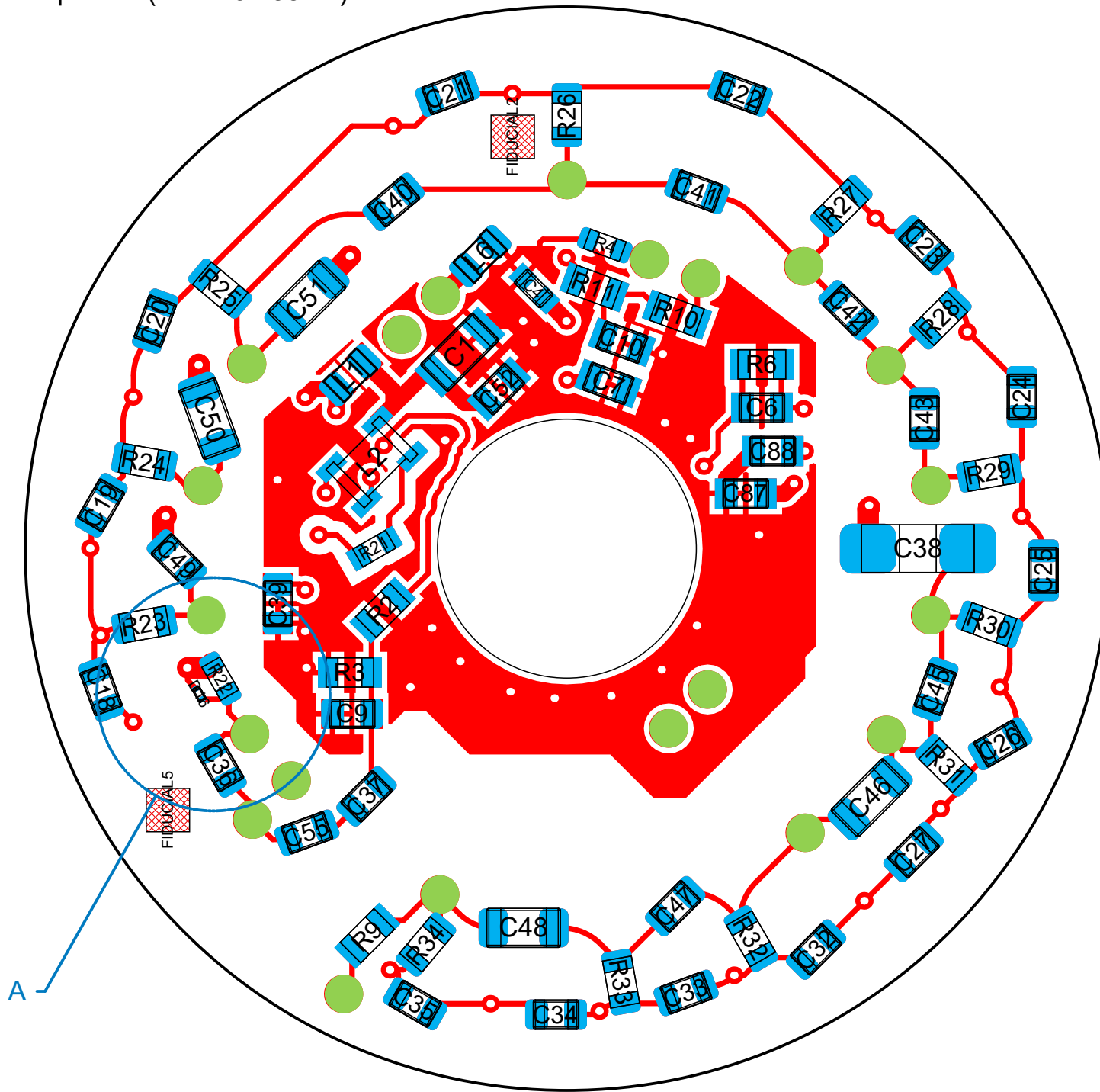


Top View (Scale 3.7584:1)

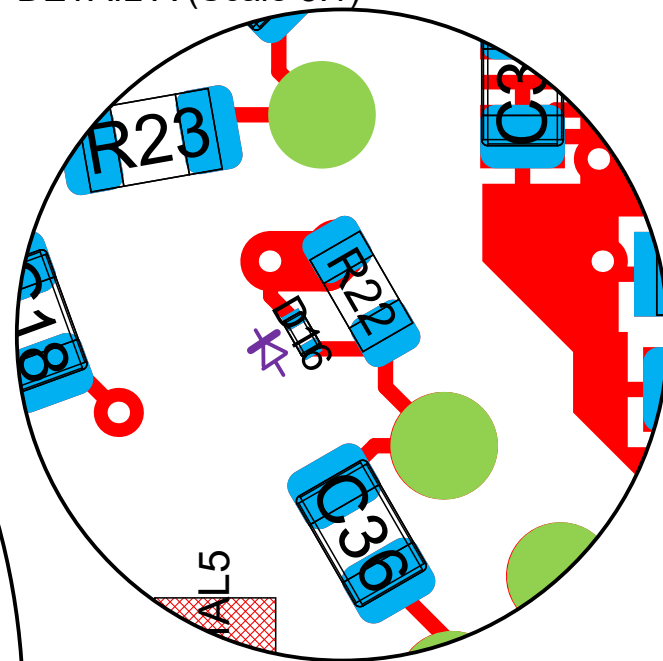
Ø50.00mm



Top View (Scale 3.7584:1)



DETAIL A (Scale 8:1)



A

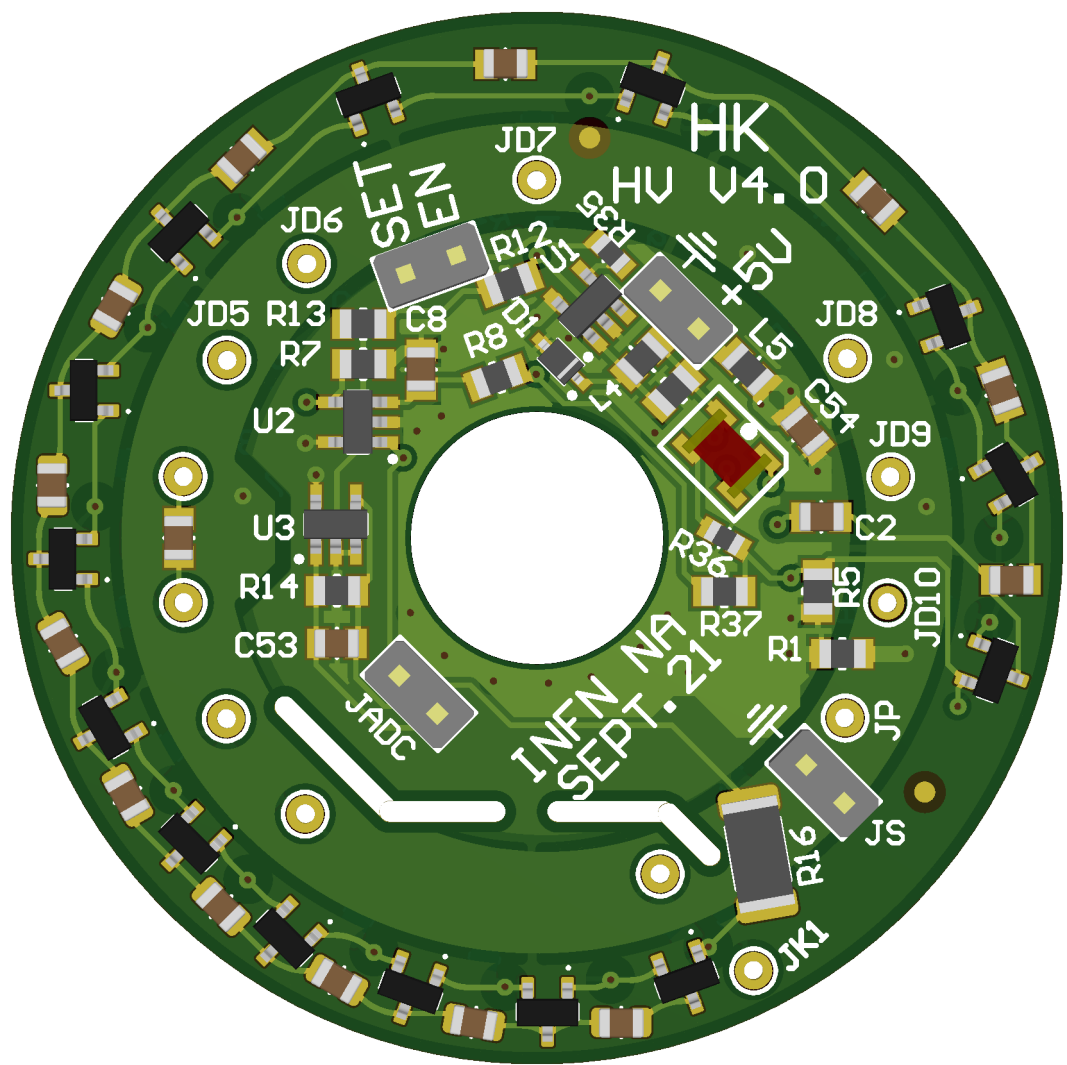
B

C

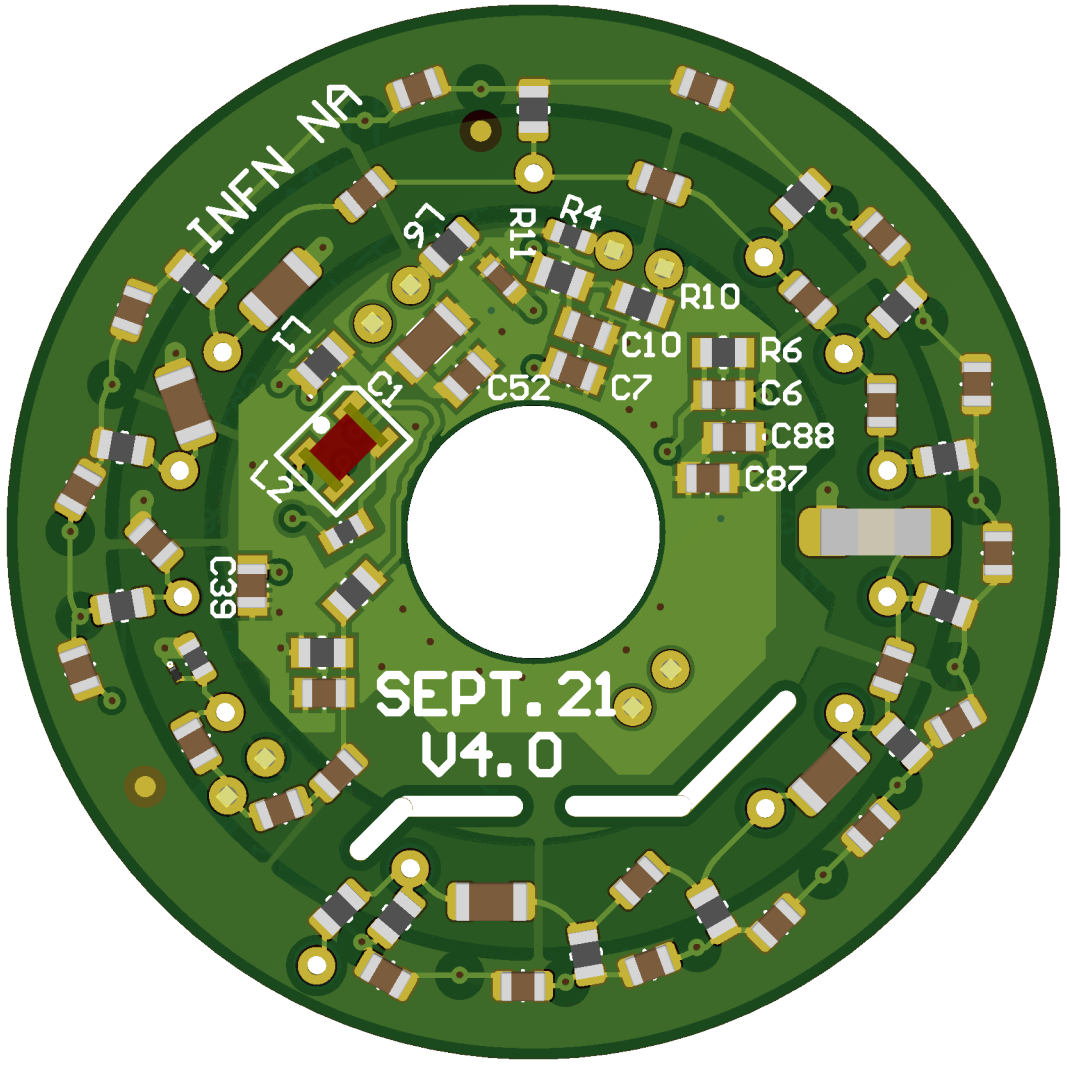
D

E

Top View



Bot View



A

B

C

D

E

Line #	Quantity	Designator	Comment	Footprint	Supplier 1	Supplier Part Number 1
1	1	C1	10uF	CAPC3216X140N		
2	37	C2, C3, C5, C11, C12, C13, C14, C15, C16, C17, C18, C19, C20, C21, C22, C23, C24, C25, C26, C27, C28, C29, C30, C31, C32, C33, C34, C35, C39, C40, C41, C42, C43, C44, C45, C47, C49	100nF	CAPC2012X135N	Digikey, [NoParam]	445-8778-1-ND, [NoParam]
3	1	C4	2.2uF	CAPC1608X90N		
4	1	C6	1uF	CAPC2012X135N		
5	1	C7	3,3uF	CAPC2012X135N		
6	5	C8, C52, C54, C87, C88	1uF	CAPC2012X135N		
7	1	C9	5pF	CAPC2012X135N		
8	1	C10	4.7uF	CAPC2012X135N		
9	1	C36	10nF	CAPC2012X135N		
10	2	C37, C55	1pF	CAPC2012X135N		
11	1	C38	Capacita	C1808		
12	4	C46, C48, C50, C51	100nF	CAPC3216X110N		
13	1	C53	47pF	CAPC2012X135N		
14	1	D1	CDSOD323-T18L	SOD2512X110N	Farnell	2341939
15	14	D2, D3, D4, D5, D6, D7, D8, D9, D10, D11, D12, D13, D14, D15	BAV23S	SOT23-3	Mouser	621-BAV23S-7-F
16	1	D16	ESD102U102ELSE632XTSA 1	TSSLP-2-3	Digi-Key	ESD102U102ELSE632 7XTSA1CT-ND
17	4	JADC, JS, JSET, JVCC	STRIP 1X2 Female	JP2_DIP - F	Mouser	200-DW0210TS400
18	3	L1, L5, L6	330R@100MHz	INDC2012X105N		
19	2	L2, L3	ATB322524-0110	ATB3225	RSComponents	831-9315
20	1	L4	120R@100MHz	INDC2012X105N		
21	1	R1	3R3	RESC2012X60N		
22	3	R2, R6, R7	100K	RESC2012X60N		
23	1	R3	4K9	RESC2012X60N		
24	1	R4	10K	RESC1608X55N		
25	1	R5	100k	RESC2012X60N		
26	1	R8	470K	RESC2012X60N		
27	1	R9	1G	RESC2012X60N	Digi-Key	A106115CT-ND
28	1	R10	33K	RESC2012X60N		
29	1	R11	66K	RESC2012X60N		
30	1	R12	470	RESC2012X60N		
31	1	R13	160K	RESC2012X60N		
32	1	R14	2,2M	RESC2012X60N		
33	1	R16	1G	RESC5226X80N	Farnell	2420352
34	1	R18	3,3	RESC2012X60N		
35	2	R21, R36	100	RESC1608X55N		
36	1	R22	220K	RESC1608X55N		
37	1	R23	330K	RESC2012X60N		
38	1	R24	680K	RESC2012X60N		
39	1	R25	1M	RESC2012X60N		
40	9	R26, R27, R28, R29, R30, R31, R32, R33, R34	3M3	RESC2012X60N		
41	1	R35	100	RESC1608X55N		
42	1	R37	10K	RESC2012X60N		
43	1	U1	MIC2251-1YD5TR	SOT95P280X110-5N	Digikey	576-3992-1-ND
44	2	U2, U3	NCS333SN2T1G	SOT95P280X100-5N	RSComponents	8742418