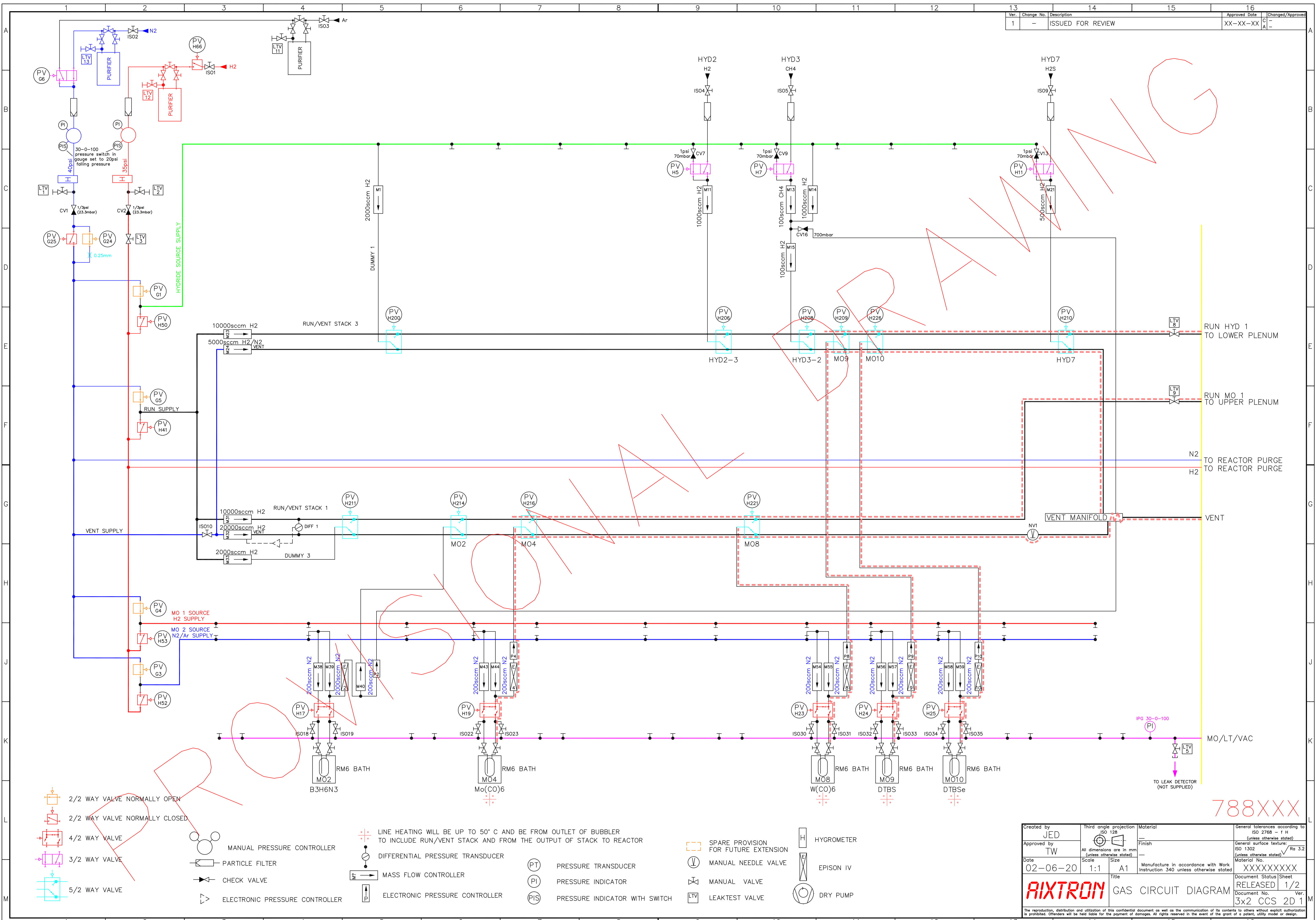


Ver.	Change No.	Description	Approved Date	Changed/Approved
1	-	ISSUED FOR REVIEW	XX-XX-XX	C/A



- 2/2 WAY VALVE NORMALLY OPEN
- 2/2 WAY VALVE NORMALLY CLOSED
- 4/2 WAY VALVE
- 3/2 WAY VALVE
- 5/2 WAY VALVE
- MANUAL PRESSURE CONTROLLER
- PARTICLE FILTER
- CHECK VALVE
- ELECTRONIC PRESSURE CONTROLLER

- LINE HEATING WILL BE UP TO 50° C AND BE FROM OUTLET OF BUBBLER TO INCLUDE RUN/VENT STACK AND FROM THE OUTPUT OF STACK TO REACTOR
- DIFFERENTIAL PRESSURE TRANSDUCER
- MASS FLOW CONTROLLER
- ELECTRONIC PRESSURE CONTROLLER
- (PT) PRESSURE TRANSDUCER
- (PI) PRESSURE INDICATOR
- (PIS) PRESSURE INDICATOR WITH SWITCH

- SPARE PROVISION FOR FUTURE EXTENSION
- MANUAL NEEDLE VALVE
- MANUAL VALVE
- LEAKTEST VALVE
- HYGROMETER
- EPISON IV
- DRY PUMP

Created by JED	Third angle projection ISO 128	Material ISO 2768 - 1 H (unless otherwise stated)	General tolerances according to ISO 2768 - 1 H (unless otherwise stated)
Approved by TW	All dimensions are in mm (unless otherwise stated)	Finish ISO 1302 (unless otherwise stated)	General surface texture: ISO 1302 (unless otherwise stated)
Date 02-06-20	Scale 1:1	Size A1	Document Status Sheet RELEASD 1/2
Title AIXTRON GAS CIRCUIT DIAGRAM		Material No. XXXXXXXXXX	Document No. 3x2 CCS 2D 1

788XXX

The reproduction, distribution and utilization of this confidential document as well as the communication of its contents to others without explicit authorization is prohibited. Offenders will be held liable for the payment of damages. All rights reserved in the event of the grant of a patent, utility model or design.