

Stericut

08-84-03

Sterile Packed Reciprocating Saw Blades

Rzeczywisty rozmiar

Actual Size
Blade Shape

Kształt ostrogi

De Soutter
Medical
Part N°.

Nr. kat.

grubość
ostrogi

Blade
Thickness
(mm)

Cut
Thickness
(mm)

grubość
cięcia

skok
zębków

Tooth
Pitch
(mm)

Useable
Length
(mm)

dł.
mżytkowania

szerokość
ostrogi

Blade
Height
(mm)



S84-375

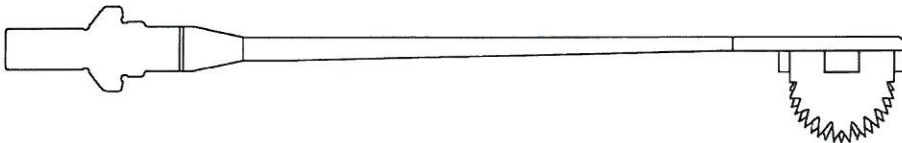
1.0

1.27

1.28

76.3

12.5



S84-380

3.75

15.0

15.0



S84-381

2.93

15.0

14.0

Rev. No. 3

DE SOUTTER

08-84-03



08-84-02

Sterylne pakowane ostrza Sterile Packed Reciprocating Saw Blades

RZECZYWISTY ROZMIAR

Actual Size
Blade Shape

Kształt ostrza

De Soutter
Medical
Part N°.

Nr kat.

grubość
ostrza
Blade
Thickness
(mm)

Cut
Thickness
(mm)

grubość
cięcia

skok
zębów
Tooth
Pitch
(mm)

Useable
Length
(mm)

di.
mętkowa

wysokość
ostrza
Blade
Height
(mm)



S84-358 0.6 1.00 1.4 90.0 11.9



S84-359 0.6 1.00 1.4 53.6 10.4



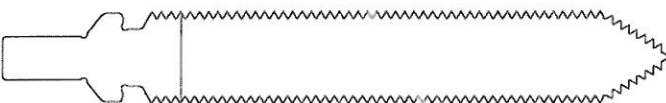
S84-361 1.3 1.50 1.4 86.0 11.9



S84-363 1.3 1.5 1.4 49.8 10.4



S84-364 1.00 1.21 1.4 73.5 10.0



S84-373 0.6 1.00 1.28 67.3 12.5

Rev. No. 6

DE SOUTTER

08-84-02

Stericut

08-89-05

Sterilnie pakowane ostro Sterile Packed Sagittal Saw Blades

Rzeczywisty rozmiar

Actual Size
Blade Shape

Kształt ostro

De Soutter
Medical
Part N°.

Nr kuzt.

głębokość
ostro

Blade
Thickness
(mm)

Cut
Thickness
(mm)

głębokość
cięcie

skok
zębów

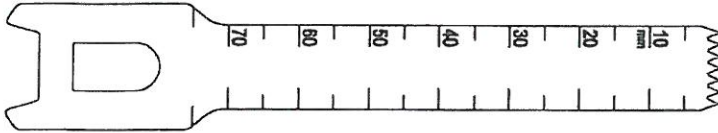
Tooth
Pitch
(mm)

Useable
length
(mm)

dł.
mątkowa

szerokość
ostro

Blade
Width
(mm)



S89-1522

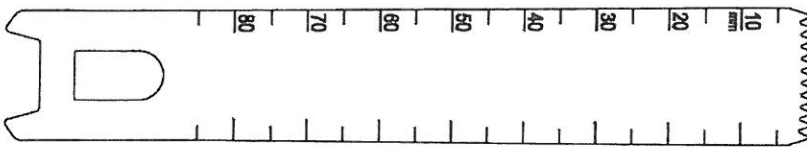
0.70

0.90

1.7(15)

75.0

12.0



S89-1553

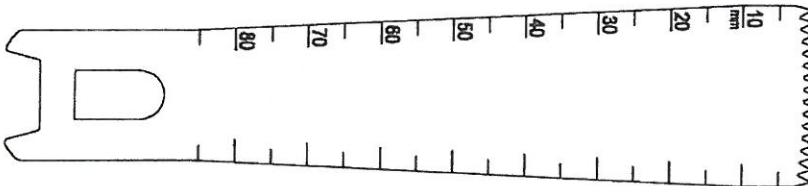
0.80

1.00

1.7(15)

85.0

19.0



S89-1573

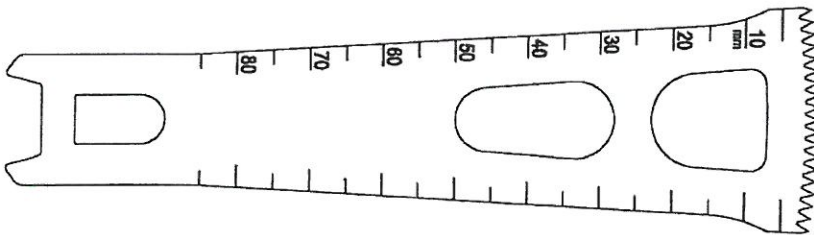
0.80

1.00

1.7(15)

85.0

25.0



S89-1586

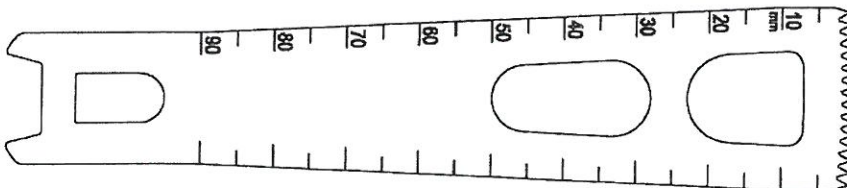
1.20

1.27

1.7(15)

85.0

31.0



S89-1676

1.20

1.27

1.7(15)

90.0

25.0

DE SOUTTER

Rev. No. 4

08-89-05

Stericut

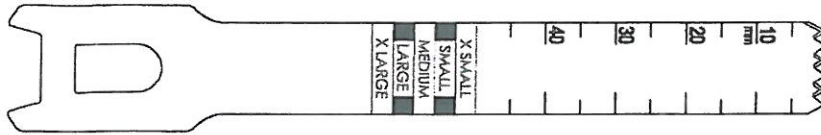
08-89-10

Sterile Packed Sagittal Saw Blades

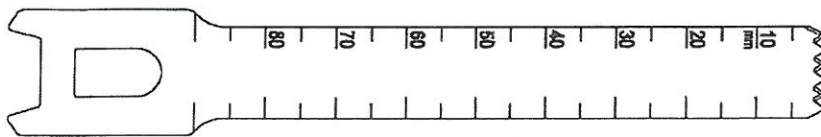
sterylne pakowane ostro
Rzeczywisty rozmiar
Kształt ostro

głębokość ostro
Skok zębów
średnica ostro
Nr kat.
głębokość cięcia
ciężar, wydajność

Actual Size Blade Shape	De Soutter Medical Part No.	Blade Thickness (mm)	Cut Thickness (mm)	Tooth Pitch (mm)	Useable length (mm)	Blade Width (mm)
----------------------------	-----------------------------------	----------------------------	--------------------------	------------------------	---------------------------	------------------------



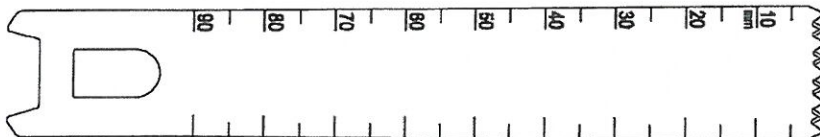
S89-6632	0.89	0.89	2.1(12)	90.0	13.0
-----------------	------	------	---------	------	------



S89-6633	0.97	0.97	2.1(12)	90.0	13.0
-----------------	------	------	---------	------	------

S89-6636	1.27	1.27	2.1(12)	90.0	13.0
-----------------	------	------	---------	------	------

S89-6637	1.37	1.37	2.1(12)	90.0	13.0
-----------------	------	------	---------	------	------



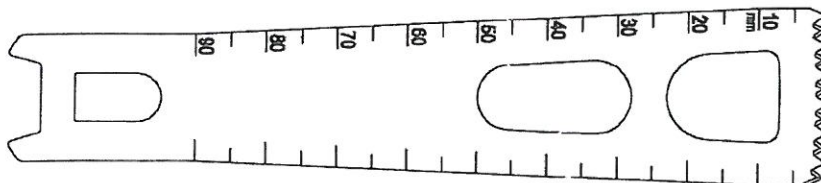
S89-6653	0.97	0.97	2.1(12)	90.0	19.0
-----------------	------	------	---------	------	------

S89-6655	1.19	1.19	2.1(12)	90.0	19.0
-----------------	------	------	---------	------	------

S89-6656	1.27	1.27	2.1(12)	90.0	19.0
-----------------	------	------	---------	------	------

S89-6657	1.37	1.37	2.1(12)	90.0	19.0
-----------------	------	------	---------	------	------

S89-6658	1.47	1.47	2.1(12)	90.0	19.0
-----------------	------	------	---------	------	------



S89-6673	0.97	0.97	2.1(12)	90.0	25.0
-----------------	------	------	---------	------	------

S89-6675	1.19	1.19	2.1(12)	90.0	25.0
-----------------	------	------	---------	------	------

S89-6676	1.27	1.27	2.1(12)	90.0	25.0
-----------------	------	------	---------	------	------

S89-6677	1.37	1.37	2.1(12)	90.0	25.0
-----------------	------	------	---------	------	------

S89-6678	1.47	1.47	2.1(12)	90.0	25.0
-----------------	------	------	---------	------	------

Rev No. 2

DE SOUTTER

08-89-10