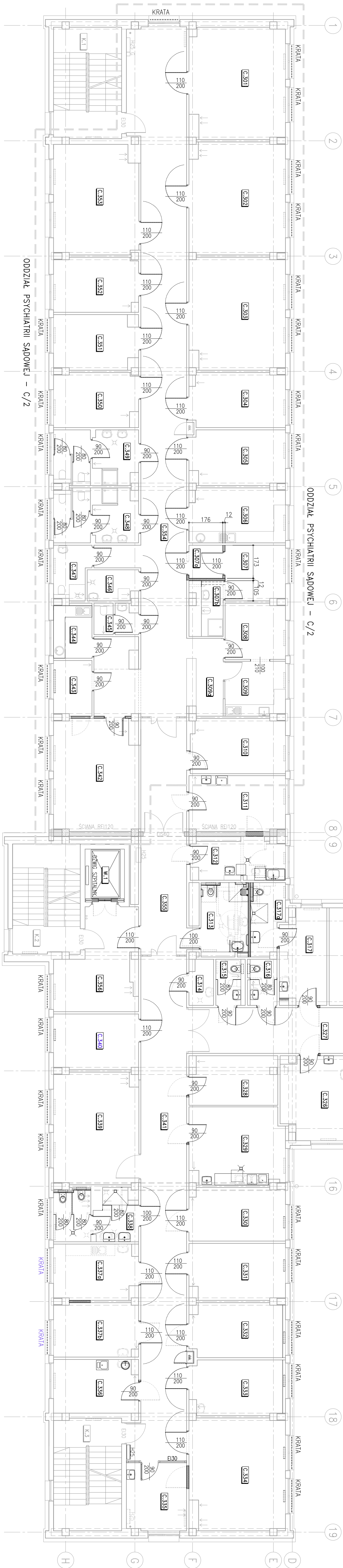


BUDYNEK NR 19 "C"  
II PIĘTRO 1:100

ZESTAWIENIE POMIĘSZCZEŃ					
DZIAŁA C/1					
nr	POL.	NAZWA POMIĘSZCZENIA	POSIADAZA	POM. UŻYTK.	POM. RUCHOM.
G.3111	POL.	POM. POZIOMYKONE	GRĘS	9,54 m2	
G.3112	POL.	BRUDOWNIK	GRĘS	9,43 m2	
G.3113	POL.	ŁĄCZNIKA NIEPEŁNOSPŁY	GRĘS	8,89 m2	
G.3114	POL.	MAGAZYN PORĘBYCZY	GRĘS	2,87 m2	
G.3115	POL.	WC PERSONELU	GRĘS	3,12 m2	
G.3116	POL.	WC PERSONELU	GRĘS	3,36 m2	
G.3117	POL.	TOILET PRACZCIE	TARBEIT	11,45 m2	
G.3118	POL.	ŁAZIENKA	GRĘS	6,00 m2	
G.3119	POL.	GABINET LEKARSKI	TARBEIT	18,42 m2	
G.3120	POL.	GABINET LEKARSKI	TARBEIT	15,17 m2	
G.3121	POL.	PSYCHOTERAPIA	TARBEIT	13,08 m2	
G.3122	POL.	POM. PODWOJOWE	TARBEIT	29,46 m2	
G.3123	POL.	GABINET LEKARSKI	TARBEIT	8,23 m2	
G.3124	POL.	GABINET GIGIENOWY	TARBEIT	12,02 m2	
G.3125	POL.	SERWISANT	TARBEIT	11,61 m2	
G.3126	POL.	GABINET DOZWIADOWY	TARBEIT	12,59 m2	
G.3127	POL.	KORIDAR	TARBEIT	14,65 m2	
G.3128	POL.	KORIDAR	TARBEIT	11,39 m2	51,20 m2
G.3129	POL.	KUCHNIA DOZWIADOWA	GRĘS	19,42 m2	
G.3130	POL.	SALA POLECIOWYCH	TARBEIT	13,73 m2	
G.3131	POL.	SALA POLECIOWYCH	TARBEIT	14,43 m2	
G.3132	POL.	SALA OBSERWACJI	TARBEIT	13,27 m2	
G.3133	POL.	SALA OBSERWACJI	TARBEIT	13,98 m2	
G.3134	POL.	SALA POLECIOWYCH	TARBEIT	28,41 m2	
G.3135	POL.	PUNKT PRZECIWOZACZY	TARBEIT	10,99 m2	
G.3136	POL.	POM. PRZECIWOZACZY	TARBEIT	12,06 m2	
G.3137	POL.	SALA POLECIOWYCH	TARBEIT	12,22 m2	
G.3138	POL.	SALA POLECIOWYCH	TARBEIT	10,21 m2	
G.3139	POL.	ŁAZIENKA PERSONELU	GRĘS	12,75 m2	
G.3140	POL.	JADALNIA	TARBEIT	25,40 m2	
G.3141	POL.	PALATYNA	GRĘS	12,66 m2	
G.3142	POL.	KORIDAR	TARBEIT	64,09 m2	
G.3143	POL.	KORIDAR	TARBEIT	28,75 m2	
G.3144	POL.	HALL ROKOWY	TARBEIT	18,73 m2	
G.3145	POL.	KUCHNIA SERWISOWA	GRĘS	20,05 m2	
G.3146	POL.	KUCHNIA SERWISOWA	GRĘS	20,60 m2	
G.3147	POL.	KUCHNIA SERWISOWA	GRĘS	20,55 m2	
G.3148	POL.	STOPIE SERWISOWA	GRĘS	5,64 m2	
SIŁOWNIA				424,14 m2	
POWIERZCHNIA				210,88 m2	
RAZEM				635,02 m2	











ZESAMNIENIE POMIESZCZEN				
000204 PSYCHIATR SADOWY C/2				
NR. POM.	NAZWA POMIESZCZENIA	POSADZKA	POW. UZYTK.	POW. RUCHU
C.3001	SALA PIELERNIOW	TARZETT	28,28 m2	
C.3002	SALA PIELERNIOW	TARZETT	28,81 m2	
C.3003	SALA PIELERNIOW	TARZETT	28,71 m2	
C.3004	SALA PIELERNIOW	TARZETT	13,88 m2	
C.3005	SALA PIELERNIOW	TARZETT	13,50 m2	
C.3006	GABINET ZABIEROW	TARZETT	14,02 m2	
C.3007	IZOLANTA	TARZETT	14,82 m2	
C.3008	SALA PIELERNIOW	TARZETT	3,05 m2	
C.3009	SALA PIELERNIOW	TARZETT	3,57 m2	
C.3010	POKOJ ODPOZIWOJ	TARZETT	9,08 m2	
C.3011	PIZYTOKI PIELERNIACI	TARZETT	8,68 m2	
C.3012	PUNKT PIELERNIACI	TARZETT	8,52 m2	
C.3013	MAGAZYN CZYSTY	TARZETT	13,93 m2	
C.3014	SALA POROBY DZIECINO	TARZETT	25,11 m2	
C.3015	PALATNA	GRES	5,48 m2	
C.3016	KUCHENIA	GRES	5,52 m2	
C.3017	WC PERSONELU	GRES	3,39 m2	
C.3018	BRUDOWNIK	GRES	5,09 m2	
C.3019	LIZIENKA NIEPEKOSPR	GRES	4,18 m2	
C.3020	LIZIENKA MIESIA	GRES	10,08 m2	
C.3021	LIZIENKA DUSKIA	GRES	11,02 m2	
C.3022	SALA PIELERNIOW	TARZETT	12,08 m2	
C.3023	SALA PIELERNIOW	TARZETT	11,28 m2	
C.3024	GABINET PSYCHOLOGA	TARZETT	12,82 m2	
C.3025	PSYCHOTERAPIA	TARZETT	24,76 m2	
C.3026	KORIDAR	TARZETT	10,80 m2	
C.3027	KUCHA SADOWA	GRES	20,43 m2	
C.3028				
C.3029				
C.3030				
C.3031				
C.3032				
C.3033				
C.3034				
C.3035				
C.3036				
C.3037				
C.3038				
C.3039				
C.3040				
C.3041				
C.3042				
C.3043				
C.3044				
C.3045				
C.3046				
C.3047				
C.3048				
C.3049				
C.3050				
C.3051				
C.3052				
C.3053				
C.3054				
C.3055				
C.3056				
C.3057				
C.3058				
C.3059				
C.3060				
C.3061				
C.3062				
C.3063				
C.3064				
C.3065				
C.3066				
C.3067				
C.3068				
C.3069				
C.3070				
C.3071				
C.3072				
C.3073				
C.3074				
C.3075				
C.3076				
C.3077				
C.3078				
C.3079				
C.3080				
C.3081				
C.3082				
C.3083				
C.3084				
C.3085				
C.3086				
C.3087				
C.3088				
C.3089				
C.3090				
C.3091				
C.3092				
C.3093				
C.3094				
C.3095				
C.3096				
C.3097				
C.3098				
C.3099				
C.3100				
C.3101				
C.3102				
C.3103				
C.3104				
C.3105				
C.3106				
C.3107				
C.3108				
C.3109				
C.3110				
C.3111				
C.3112				
C.3113				
C.3114				
C.3115				
C.3116				
C.3117				
C.3118				
C.3119				
C.3120				
C.3121				
C.3122				
C.3123				
C.3124				
C.3125				
C.3126				
C.3127				
C.3128				
C.3129				
C.3130				
C.3131				
C.3132				
C.3133				
C.3134				
C.3135				
C.3136				
C.3137				
C.3138				
C.3139				
C.3140				
C.3141				
C.3142				
C.3143				
C.3144				
C.3145				
C.3146				
C.3147				
C.3148				
C.3149				
C.3150				
C.3151				
C.3152				
C.3153				
C.3154				
C.3155				
C.3156				
C.3157				
C.3158				
C.3159				
C.3160				
C.3161				
C.3162				
C.3163				
C.3164				
C.3165				
C.3166				
C.3167				
C.3168				
C.3169				
C.3170				
C.3171				
C.3172				
C.3173				
C.3174				
C.3175				
C.3176				
C.3177				
C.3178				
C.3179				
C.3180				
C.3181				
C.3182				
C.3183				
C.3184				
C.3185				
C.3186				
C.3187				
C.3188				
C.3189				
C.3190				
C.3191				
C.3192				
C.3193				
C.3194				
C.3195				
C.3196				
C.3197				
C.3198				
C.3199				
C.3200				
C.3201				
C.3202				
C.3203				
C.3204				
C.3205				
C.3206				
C.3207				
C.3208				
C.3209				
C.3210				
C.3211				
C.3212				
C.3213				
C.3214				
C.3215				
C.3216				
C.3217				
C.3218				
C.3219				
C.3220				
C.3221				
C.3222				
C.3223				
C.3224				
C.3225				
C.3226				
C.3227				
C.3228				
C.3229				
C.3230				
C.3231				
C.3232				
C.3233				
C.3234				
C.3235				
C.3236				
C.3237				
C.3238				
C.3239				
C.3240				
C.3241				
C.3242				
C.3243				
C.3244				
C.3245				
C.3246				
C.3247				
C.3248				
C.3249				
C.3250				
C.3251				
C.3252				
C.3253				
C.3254				
C.3255				
C.3256				
C.3257				
C.3258				
C.3259				
C.3260				
C.3261				
C.3262				
C.3263				
C.3264				
C.3265				
C.3266				
C.3267				
C.3268				
C.3269				
C.3270				
C.3271				
C.3272				
C.3273				
C.3274				
C.3275				
C.3276				
C.3277				
C.3278				
C.3279				
C.3280				
C.3281				
C.3282				
C.3283				
C.3284				
C.3285				
C.3286				
C.3287				
C.3288				
C.3289				
C.3290				
C.3291				
C.3292				
C.3293				
C.3294				
C.3295				
C.3296				
C.3297				
C.3298				
C.3299				
C.3300				
C.3301				
C.3302				
C.3303				
C.3304				
C.3305				
C.3306				
C.3307				
C.3308				
C.3309				
C.3310				
C.3311				
C.3312				
C.3313				
C.3314				
C.3315				
C.3316				
C.3317				
C.3318				
C.3319				
C.3320				
C.3321				
C.3322				
C.3323				
C.3324				
C.3325				
C.3326				
C.3327				
C.3328				
C.3329				
C.3330				
C.3331				
C.3332				
C.3333				
C.3334				
C.3335				
C.3336				
C.3337				
C.3338				
C.3339				
C.3340				
C.3341				
C.3342				
C.3343				
C.3344				
C.3345				
C.3346				
C.3347				
C.3348				
C.3349				
C.3350				
C.3351				
C.3352				
C.3353				
C.3354				
C.3355				
C.3356				
C.3357				
C.3358				
C.3359				
C.3360				
C.3361				
C.3362				
C.3363				
C.3364				
C.3365				
C.3366				
C.3367				
C.3368				
C.3369				
C.3370				
C.3371				
C.3372				
C.3373				
C.3374				
C.3375				
C.3376				
C.3377				
C.3378				
C.3379				
C.3380				
C.3381				
C.3382				
C.3383				
C.3384				
C.3385				
C.3386				
C.3387				
C.3388				
C.3389				
C.3390				
C.3391				
C.3392				
C.3393				

## ODDZIAŁ "C/2" – 21 ŁÓŻEK SZPITALNYCH

LEGENDA:

ODDDZIAŁ "C/1" - 20 ŁÓŻEK SZPITALNYCH

Założenia projektowe - Oddział C/1:[illegible]

-  DRZWI DO WYBUDOWA
-  DRZWI DO WYBUDOWA
-  DRZWI DO WYBUDOWA
-  DRZWI DO WYBUDOWA
-  DRZWI DO WYBUDOWA
-  DRZWI DO WYBUDOWA
-  DRZWI DO WYBUDOWA
-  DRZWI DO WYBUDOWA

[illegible]

**II PIĘTRO – POZIOM "C-1"**  
**KONCEPCJA FUNKCJONALNO-PRZESTRZENNĄ**