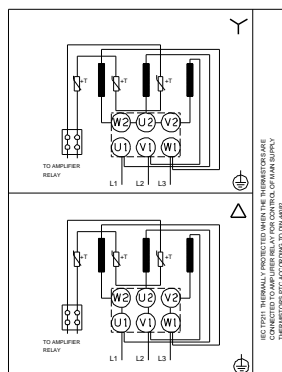
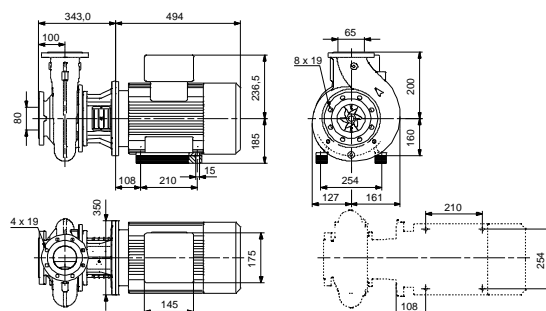
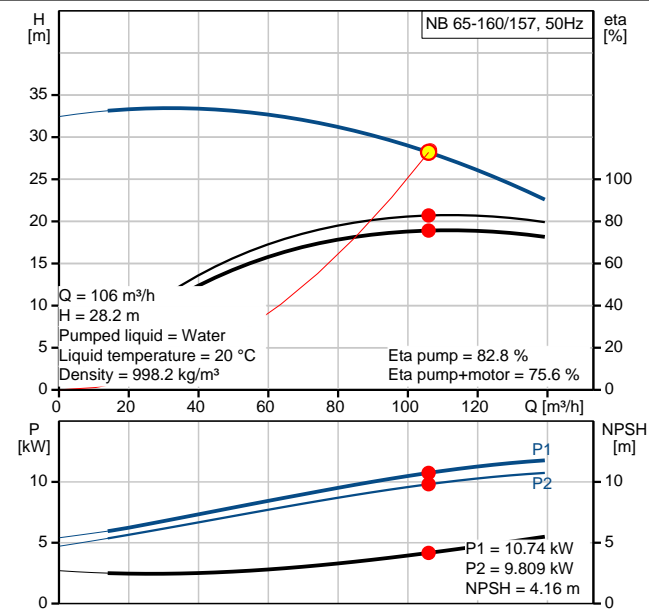


Description	Value
General information:	
Product name:	BOÎTE À ÉLÉMENTS DE POMPES
Product No:	98607642
Position	
EAN number:	5711498127470
Price:	
Technical:	
Speed for pump data:	2955 rpm
Actual calculated flow:	106 m³/h
Resulting head of the pump:	28.2 m
Actual impeller diameter:	157 mm
Impeller nom:	160 mm
Primary shaft:	BQQV
Secondary shaft seal:	NONE
Shaft diameter:	24 mm
Curve tolerance:	ISO9906:2012 3B
Pump version:	AS
Materials:	
Pump housing:	Stainless steel DIN W.-Nr. 1.4408 ASTM CF8M
Impeller:	Stainless steel DIN W.-Nr. 1.4408 ASTM CF8M
Material code:	N
Installation:	
Maximum ambient temperature:	55 °C
Maximum operating pressure:	16 bar
Flange standard:	EN 1092-2
Connect code:	F2
Pump inlet:	DN 80
Pump outlet:	DN 65
Pressure stage:	PN 16
Wear ring(s):	neckring(s)
Liquid:	
Pumped liquid:	Water
Liquid temperature range:	-10 .. 90 °C
Liquid temp:	20 °C
Density:	998.2 kg/m³
Electrical data:	
Motor type:	SIEMENS
IE Efficiency class:	IE3
Number of poles:	2
Rated power - P2:	11 kW
Mains frequency:	50 Hz
Rated voltage:	3 x 380-420D/660-725Y V
Rated current:	21,0-19,0/12,2-11,0 A
Starting current:	760-760 %
Cos phi - power factor:	0,87
Rated speed:	2955 rpm
Efficiency:	IE3 91,2%
Motor efficiency at full load:	91,2-91,2 %
Motor efficiency at 3/4 load:	91,5-91,5 %
Motor efficiency at 1/2 load:	90,6-90,6 %





Company name:

Created by:

Phone:

Date:

11/13/2015

Description	Value
Enclosure class (IEC 34-5)::	55 (Protect. water jets/dust)
Insulation class (IEC 85):	F
Motor protec:	PTC
Motor No:	83U15424
Mount. design. acc. IEC 34-7:	IM B35
Lubricant type:	Grease

Others:

Minimum efficiency index, MEI :	0.70
ErP status:	EuP Standalone/Prod.
Net weight:	165 kg
Gross weight:	173 kg
Shipping volume:	0.518 m ³



Company name:

Created by:

Phone:

Date:

11/13/2015