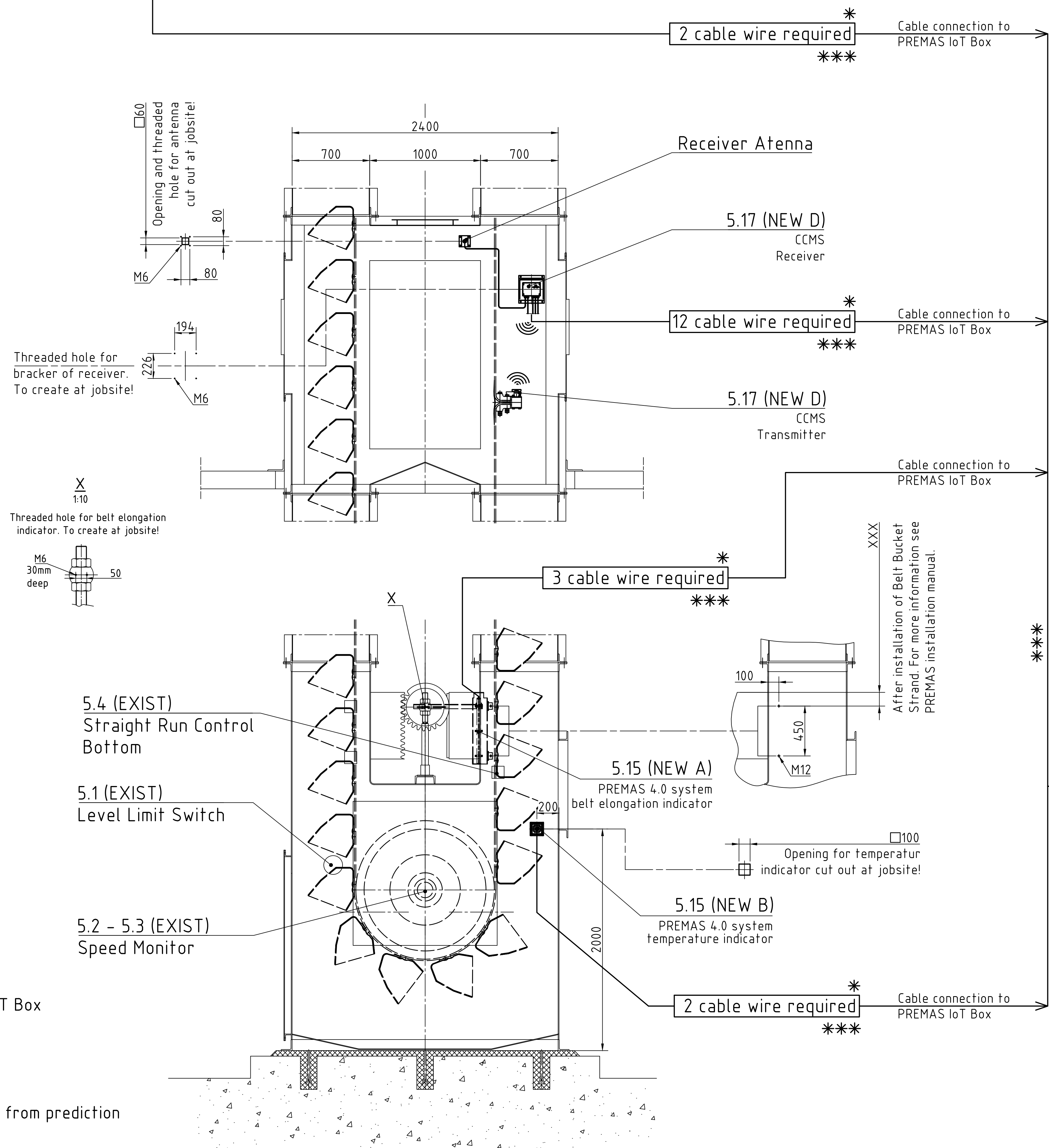
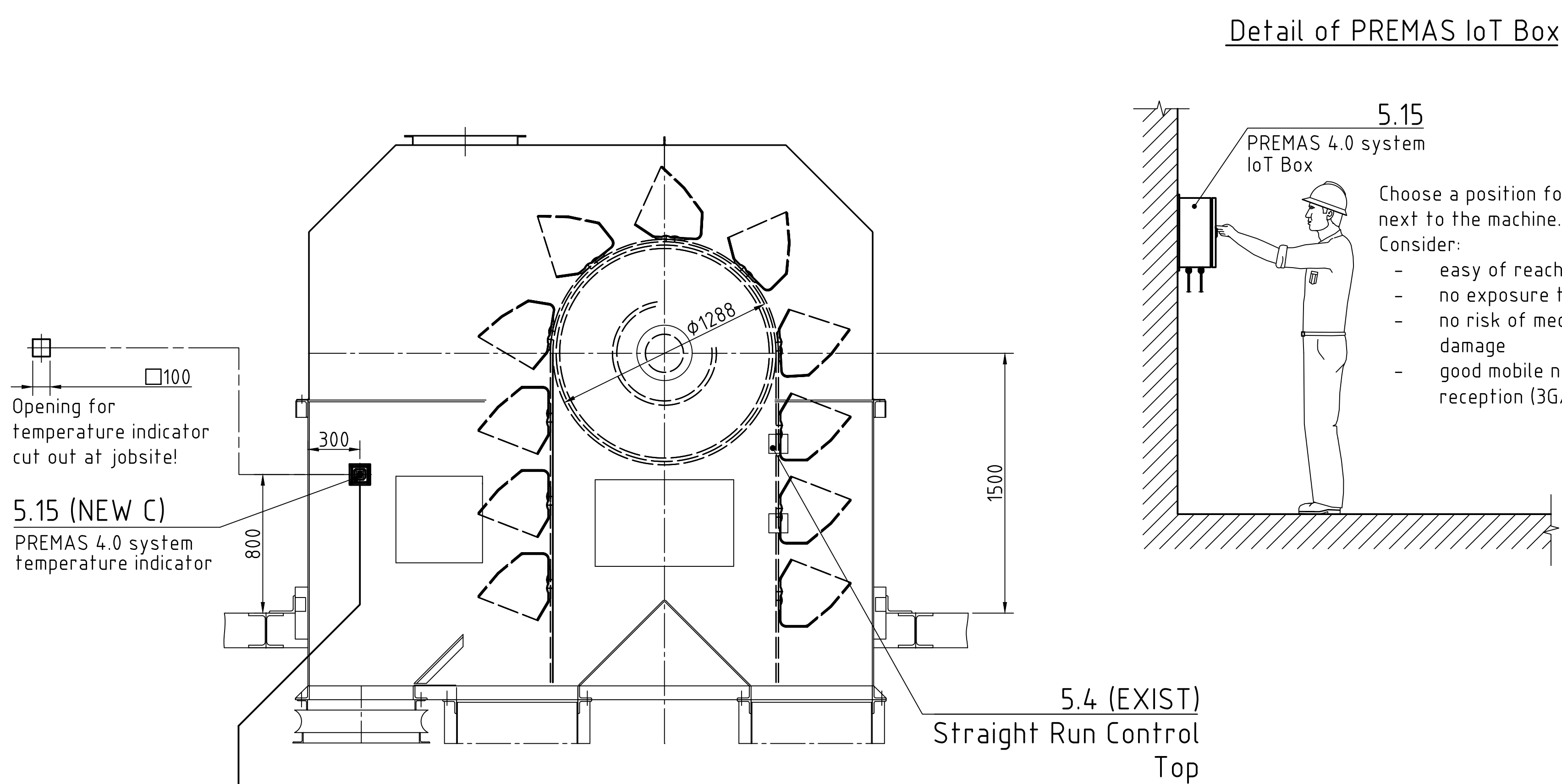
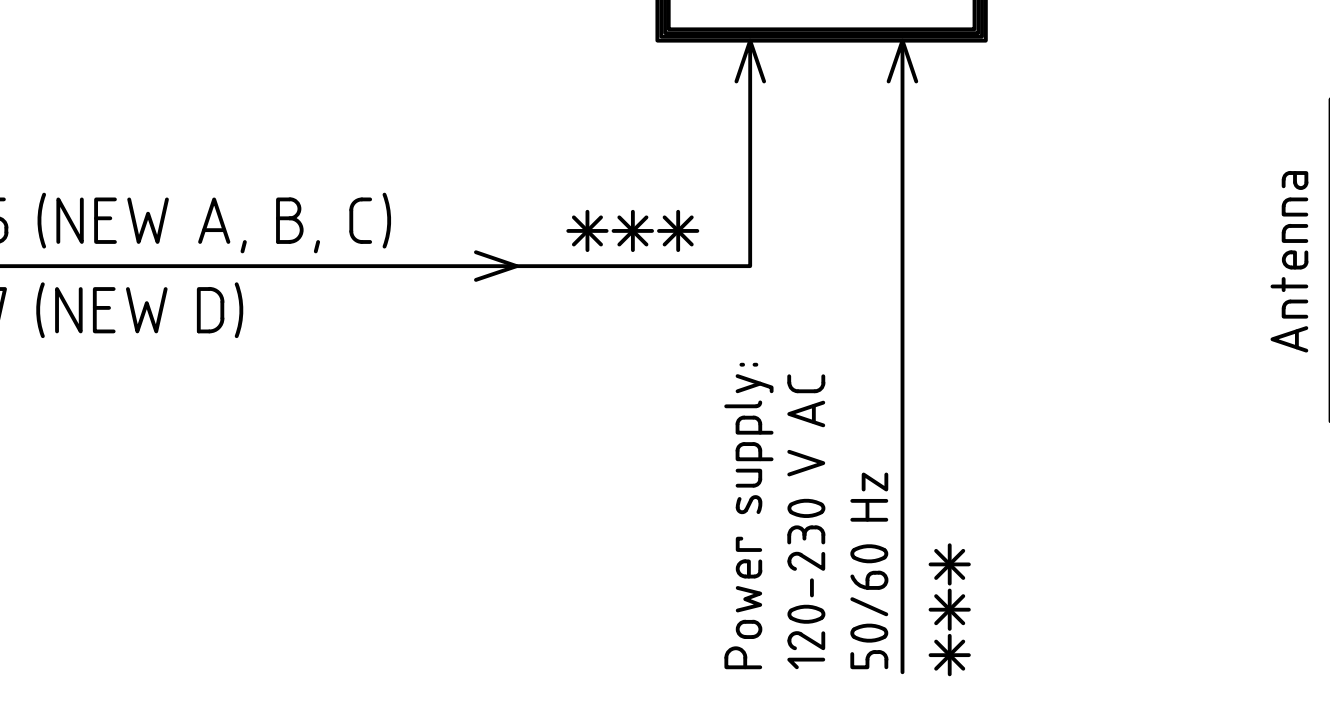
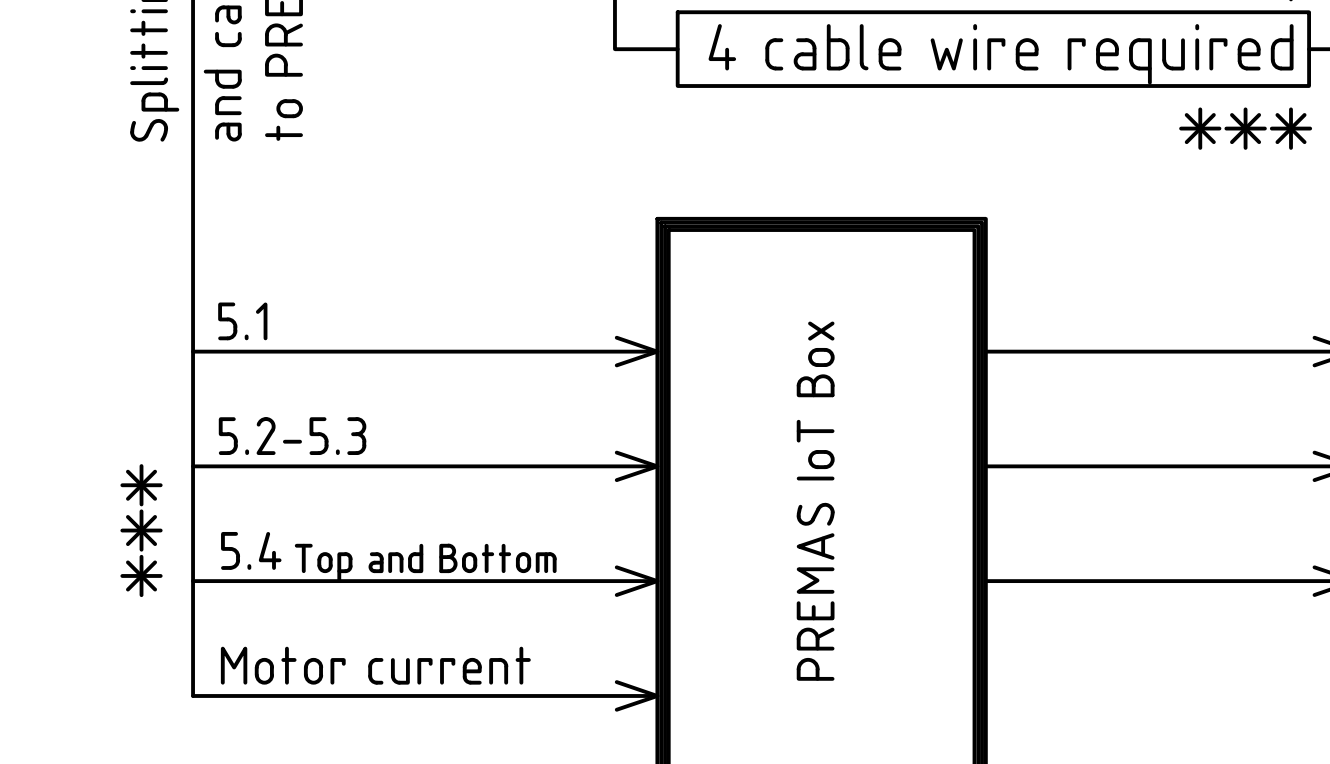
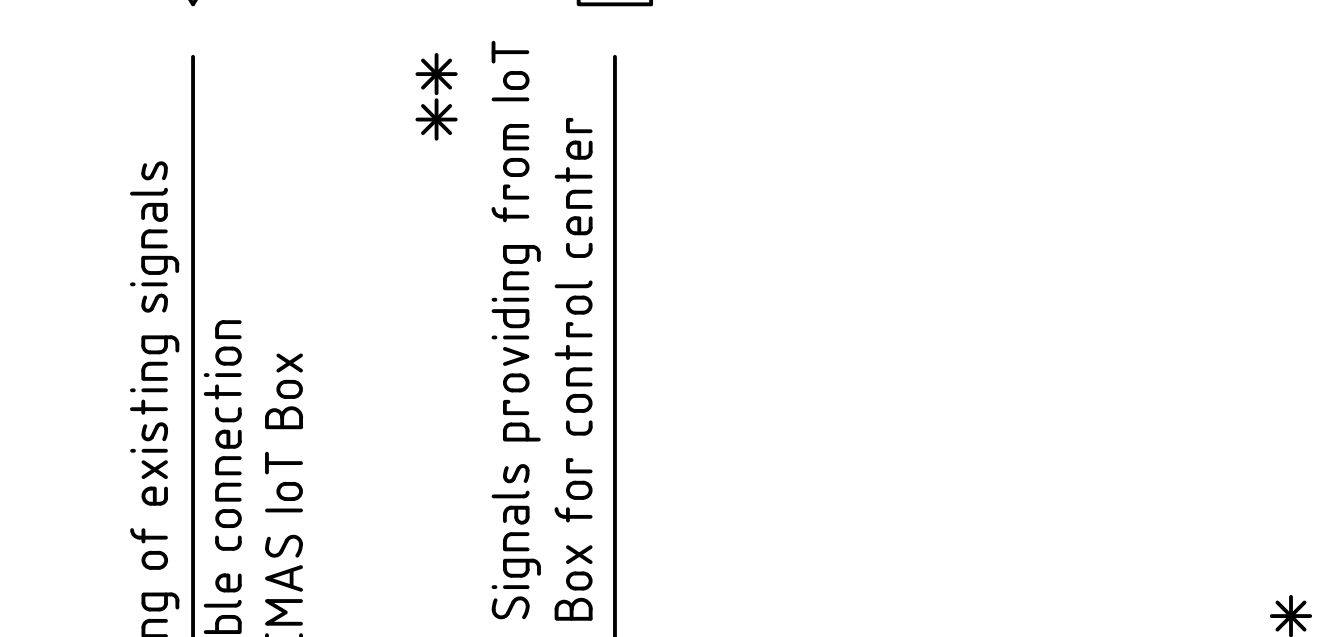
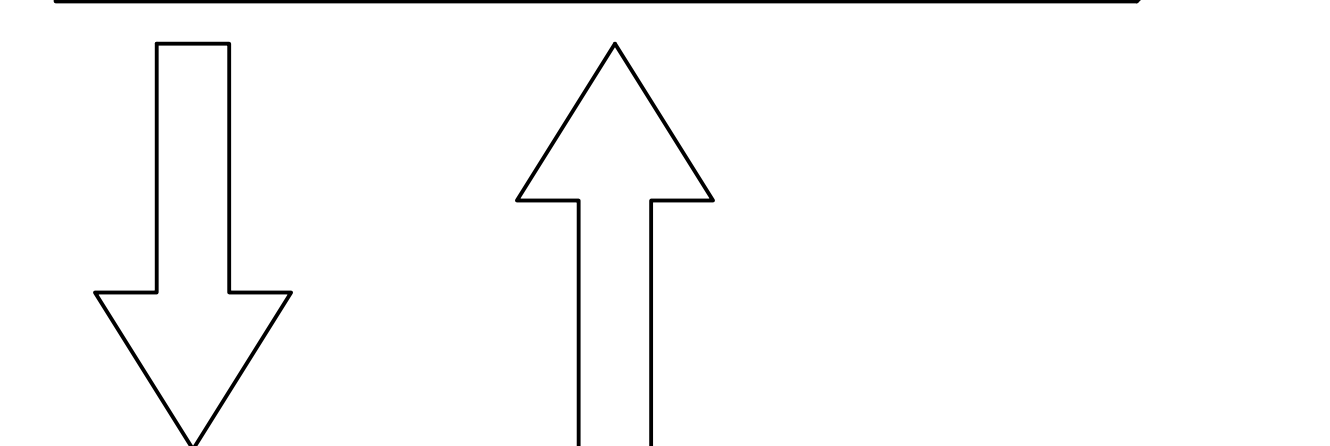
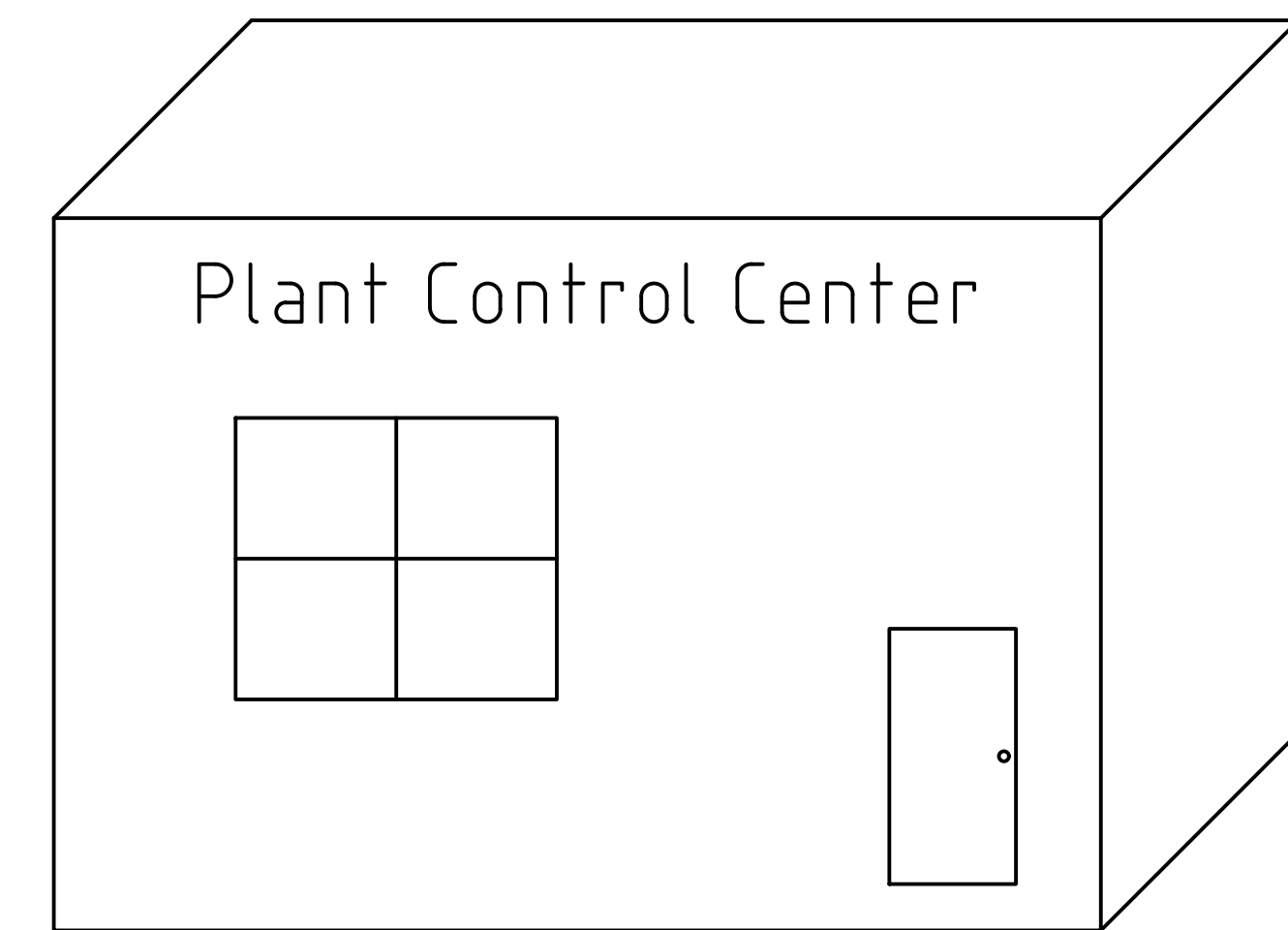


- *** Cable up to the IoT box, according to local standard for sensor signals, shielded, twisted pair, length depending on local situation.
- ** - IoT Box warning Digital signal
0 / 24 VDC PCS input signal. Signal indicating a failure of the IoT Box
1 = all good
0 = IoT more than 12 hours offline
- Machine warning Digital signal
0 / 24 VDC PCS input signal. Signal indicating a machine warning from prediction or anomaly.
1 = all good,
0 = warning Shall not trigger an interlocking but an inspection of the elevator.



CONTROL EQUIPMENT (EXISTING ELECTRICAL SAFETY DEVICES)			
5.1	LEVEL LIMIT SWITCH IN THE BUCKET ELEVATOR BOOT		
	TYPE	: Bindicator AB-S	
	VOLTAGE	: 115 - 480 V AC ; Frequency: 50 - 60Hz ; 24 - 250VDC	SUPPLIER : EXISTING
5.2	PROXIMITY SWITCH MOVEMENT DETECTOR		
	TYPE	: NJ5-18-GK-N-150 (Pepperl & Fuchs)	
	VOLTAGE	: 8 V DC Namur (DD0203)	SUPPLIER : EXISTING
5.3	SPEED MONITOR INSTALLED IN THE MOTION CONTROL CENTRE		
	TYPE	: Pepperl & Fuchs KHU8 - DW - 1D	
	VOLTAGE	: 115 - 230 V AC , 47 - 63 Hz ; 24 V DC	SUPPLIER : EXISTING
5.4	PROXIMITY SWITCH FOR STRAIGHT-RUN CONTROL OF BELT		
	TYPE	: Pepperl & Fuchs MCB 15 - U1 - U	
	VOLTAGE	: 20 - 253 V AC ; 20 - 300 V DC	SUPPLIER : EXISTING
Additional scope of supply. Installed according to separated installation manual.			
5.15 1x	PREMAS 4.0 SYSTEM		
	TYPE	: BWG	SUPPLIER : AUMUND
	VOLTAGE	: 120 - 230 V AC / 50-60Hz	
5.16 1x	Software subscription		
	TYPE	: BWG 1600	SUPPLIER : AUMUND
	CCMS (Clamping Connection Monitoring System)		
5.17 1x	TYPE	: BWG 1600	
	VOLTAGE	: POWER SUPPLY BY PREMAs 4.0	SUPPLIER : AUMUND



belt bucket elevator			
BW-G			
Connection plan PREMAs IoT Box / CCMS			
gezeichnet / drawn	geprüft / checked	freigegeben / released	Ans. durch / Prepared by
20.10.2023	20.10.2023	20.10.2023	Ans. für / Revision
Name / Name	Gottfried	Gottfried	Gottfried
Ans. durch / Prepared by			

