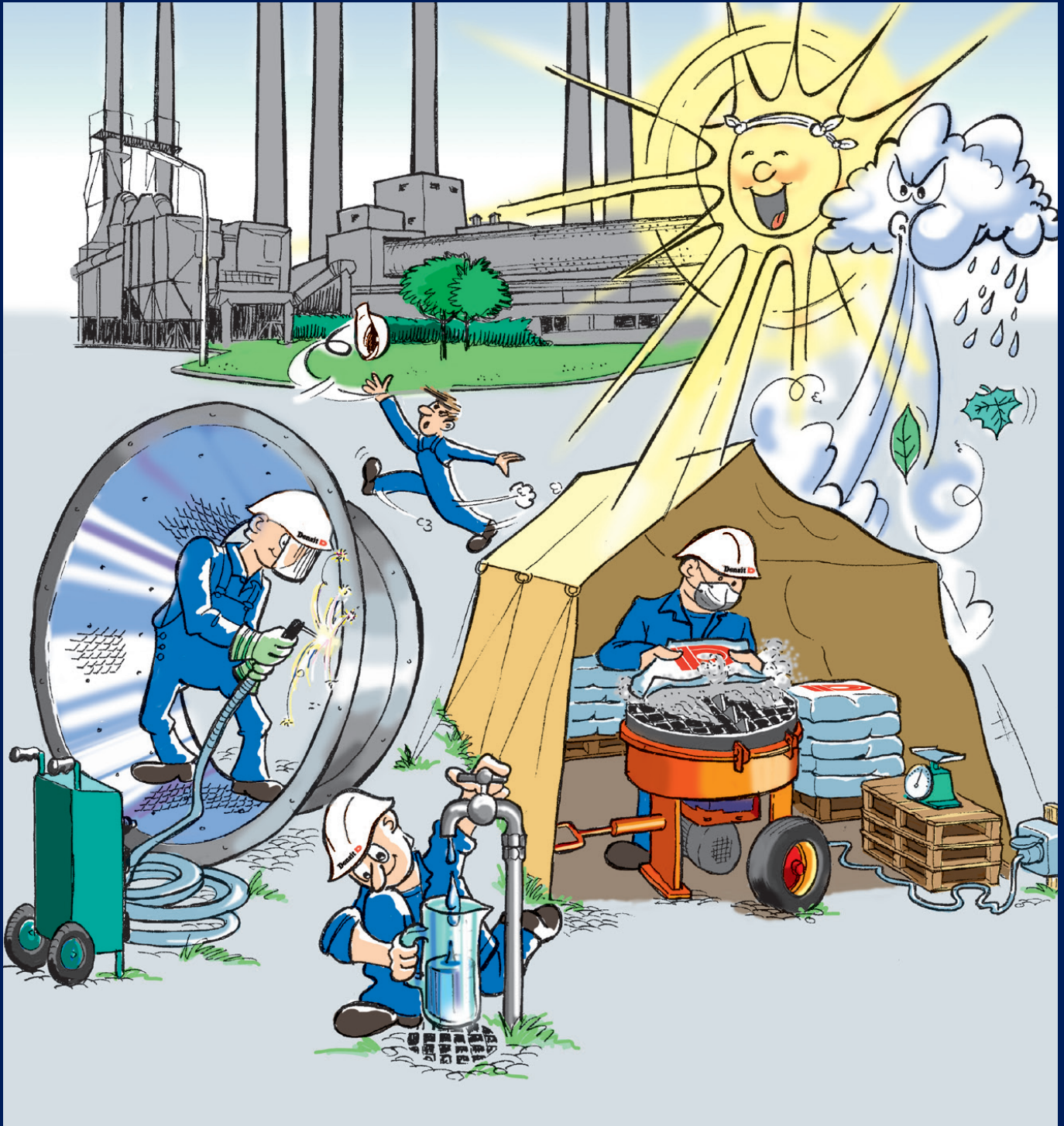


WEARFLEX INSTALLATION



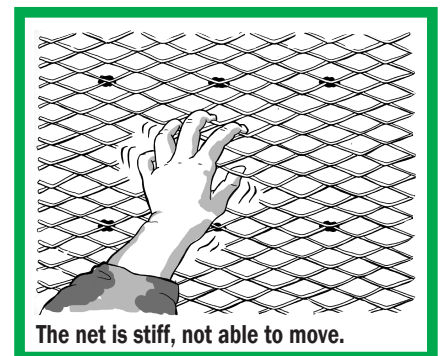
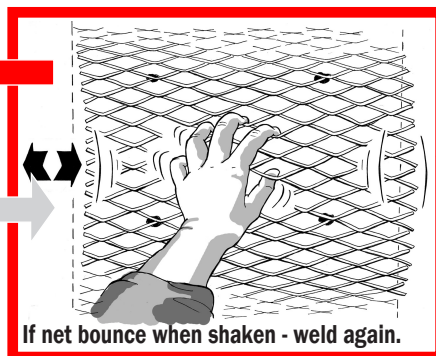
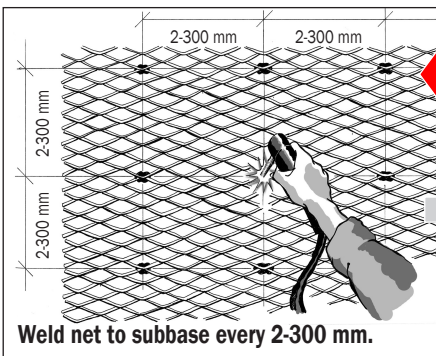
MIXING & TROWELLING EQUIPMENT



Check (✓) the availability of the following:

- Clean agitator mixer
- Clean buckets (2 minimum)
- Measuring glass (1 litre)
- Accurate scale (up to 5 kg.)
- Stopwatch
- Various trowels (as shown)
- Folding ruler
- Curing sprayer
- Personal protection (mask, glasses)

ANCHORING



MIXING Densit® WearFlex



Remember to empty the whole bag.

MIXING Densit® WearFlex



Check (✓) that you have access to:

- Agua limpia
- Corriente electrica

Check (✓) the following:

- Is the mixer sheltered against rain, wind and direct sunshine
- No lumps in the Densit® WearFlex material



Check (✓) that you:

- Add only prescribed amount of water
- Use only clean water (human consumption)



- Check the workability of the material after 5 minutes of mixing
- If necessary, add water 0,7 dl per bag - mix for min. 1 more minute until you have material which is sticky and formable



- Observe minimum mixing time 9 min.

TROWELLING Densit® WearFlex LININGS



It is important that there are no air pockets behind the net!



AFTER TREATMENT



- ✓ Surface should be as even as possible.
- ✓ Apply an even layer of Densit® Curing Compound, 0.2-0.3 l/sqm.
- ✓ Curing Compound should be without lumps.

**DO NOT FILTER !
DISSOLVE LUMPS BY SHAKING WELL.**

ITW Performance Polymers

ITW Performance Polymers ApS | T: +45 9816 7011 | E: customerservice.aalborg@itwpp.com | www.itwperformancepolymers.com

Densit