

DOKUMENTACJA FOTOGRAFICZNA

do opinii nr: 06C/01/TE/24

z dnia: 2024/02/29

DANE IDENTYFIKACYJNE POJAZDU (*)

Dane: [D] II-2024

Marka: VOLKSWAGEN

Rok produkcji: 2010

Model: Crafter 35 TDi MR'06 E5 3.5t

Wersja:

Nr rejestracyjny: PVL 15899

Rodzaj pojazdu: Samochód specjalny*



101_8039



101_8040



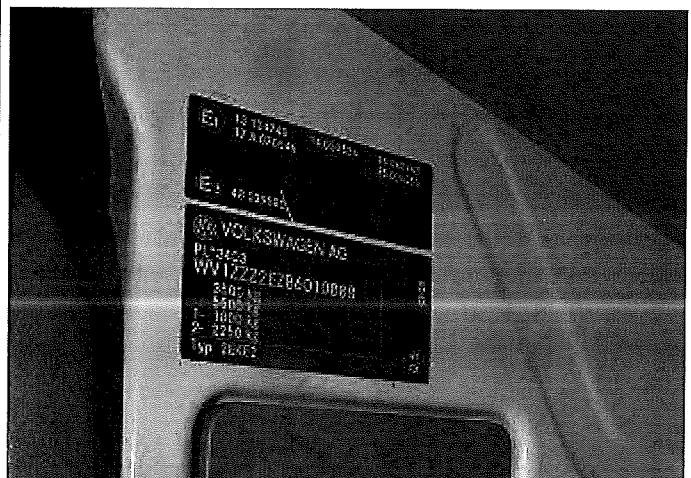
101_8033



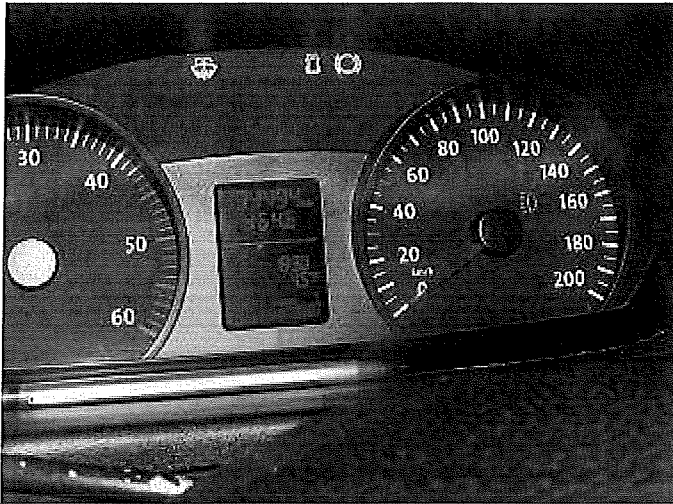
101_8034



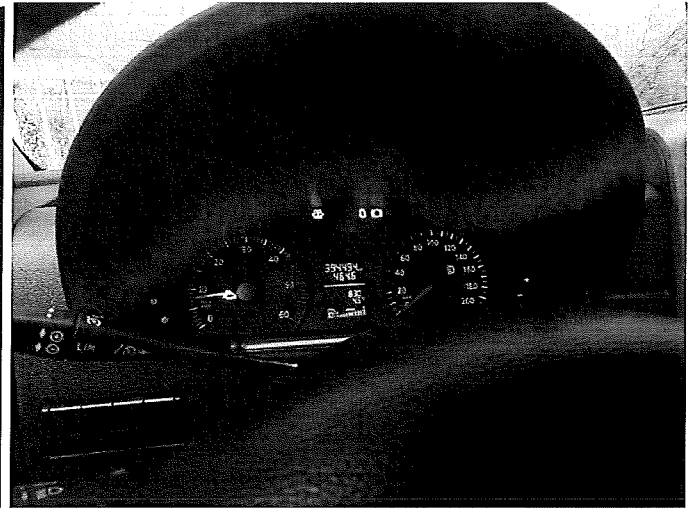
101_8035



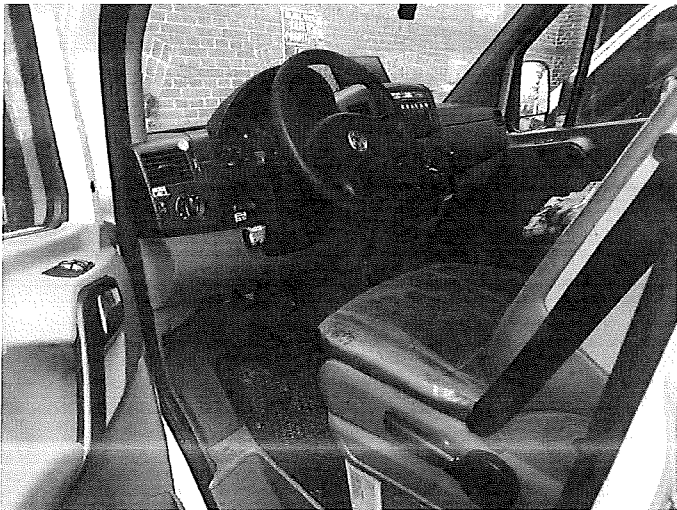
101_8046



101_8047



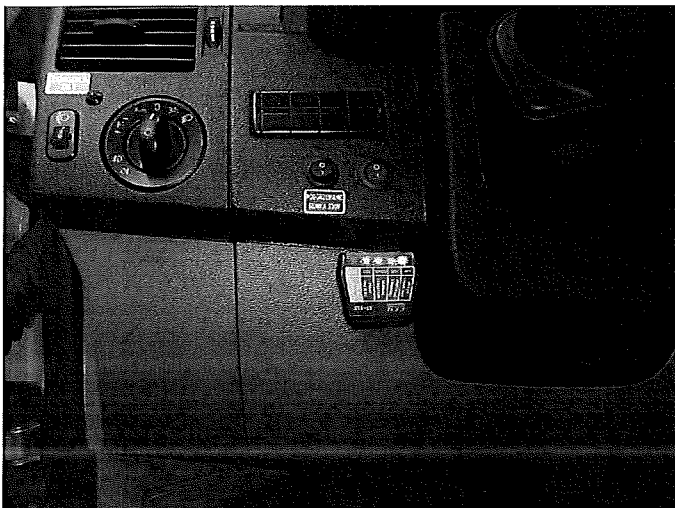
101_8048



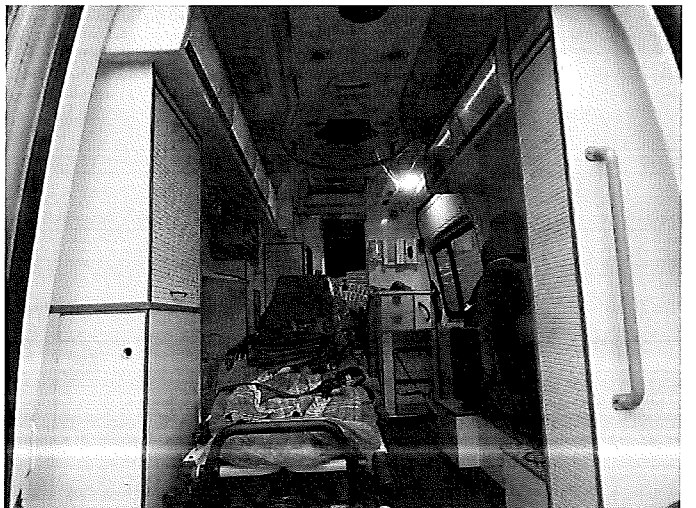
101_8051



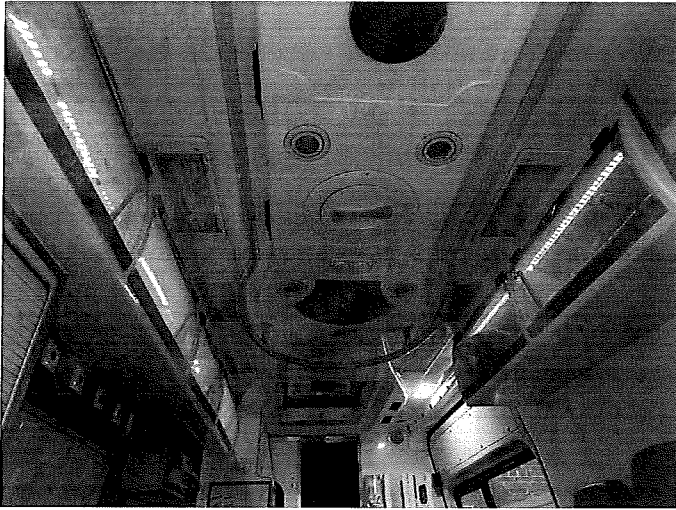
101_8049



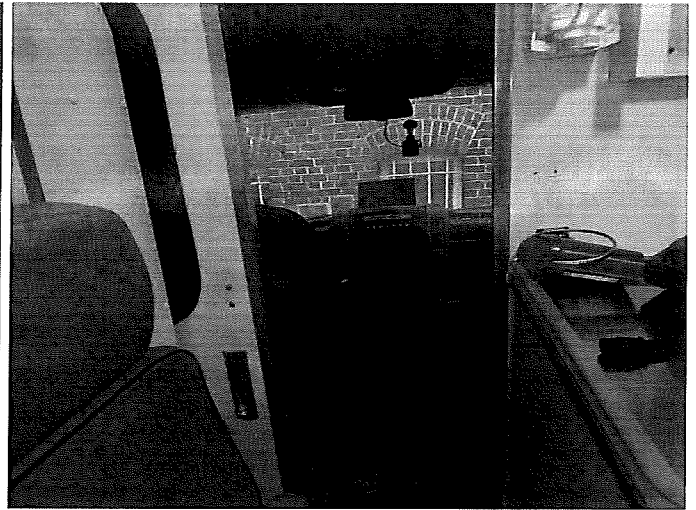
101_8052



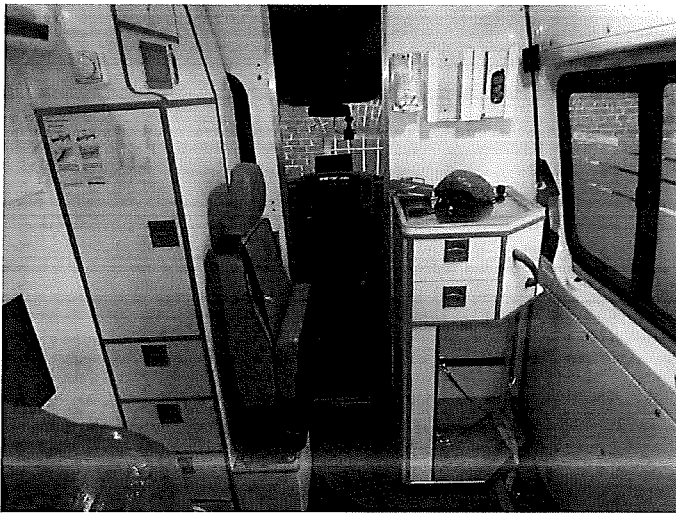
101_8066



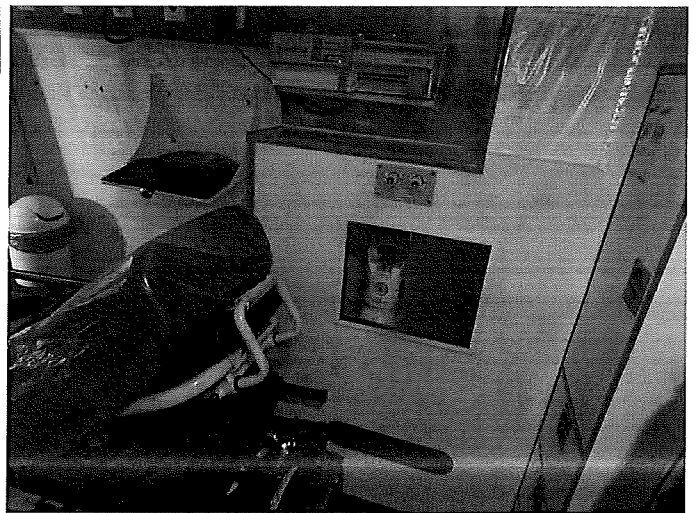
101_8067



101_8068



101_8069



101_8070



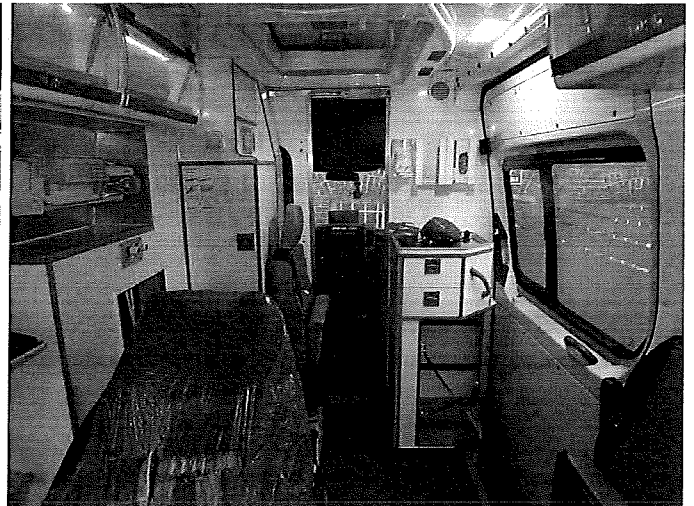
101_8071



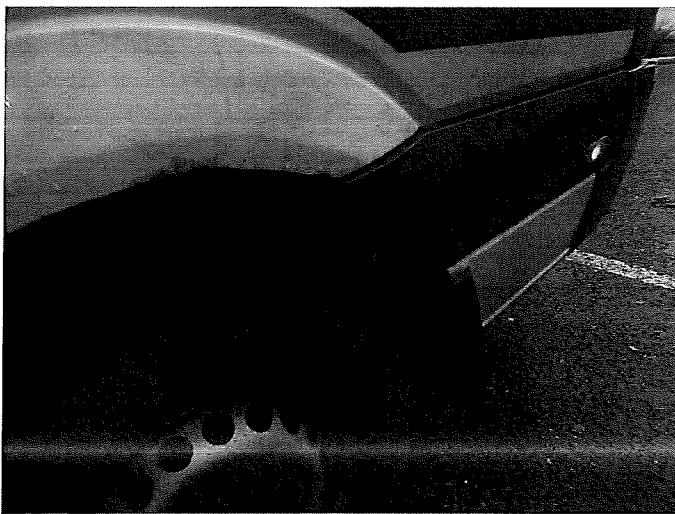
101_8072



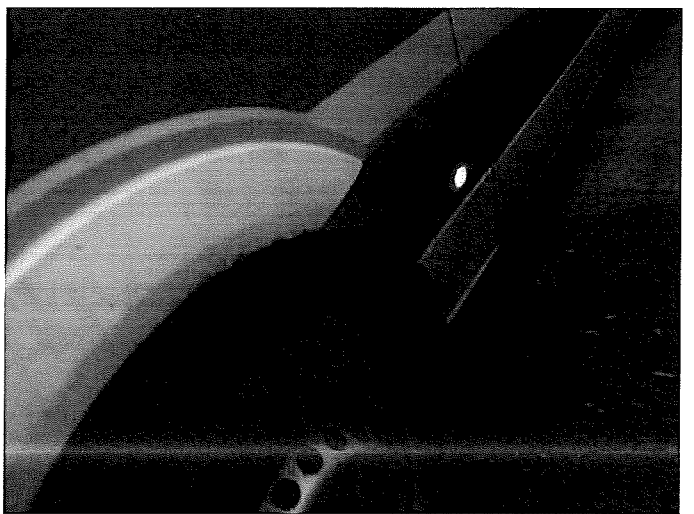
101_8073



101_8074



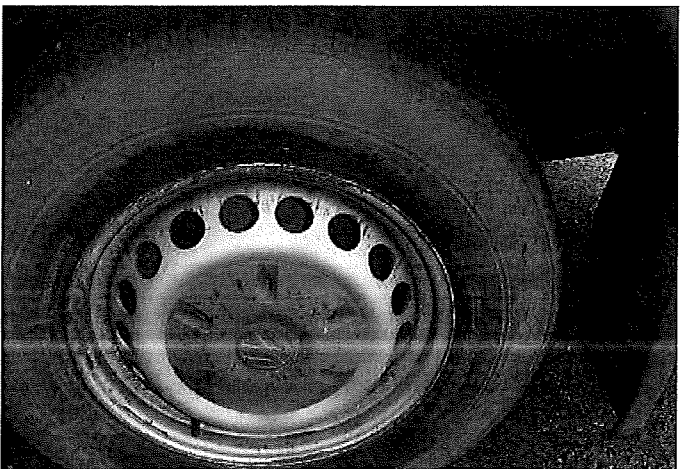
101_8060



101_8061



101_8078



101_8054