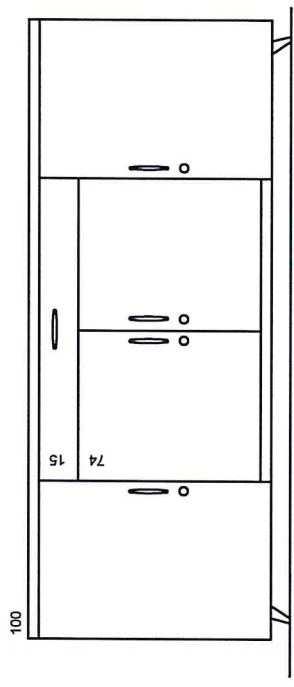
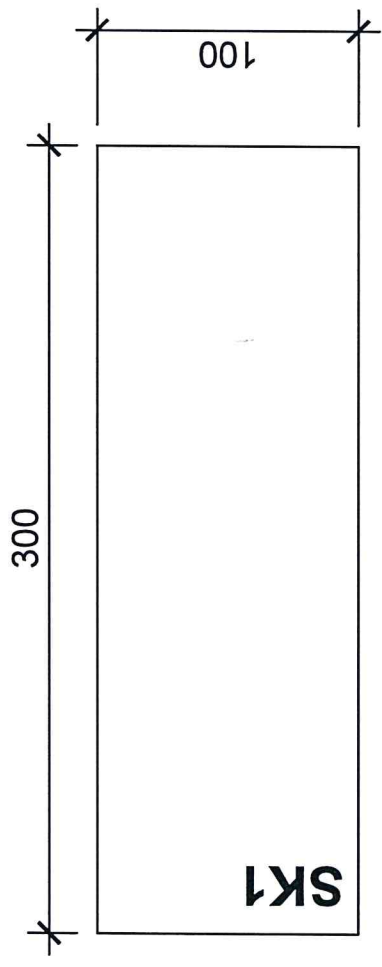


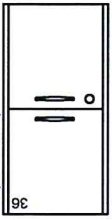
B1, B2, B3 : biurko pracownicze 120,140,160x70x77 (74 cm konstrukcja + blat 3cm),
 , przelotka fi80 UWAGA: MOŻLIWOŚĆ REGULACJI WYS. W NÓŻKACH !
St1 : stółk pracowniczy, 100x50x77 (74cm konstrukcja+ 3 cm blat)
 UWAGA: MOŻLIWOŚĆ REGULACJI WYS. W NÓŻKACH !
Smm: stolik pracowniczy 140x70x77 (74cm konstrukcja+ 3cm blat)
 UWAGA: MOŻLIWOŚĆ REGULACJI WYS. W NÓŻKACH !
SK1 : stół konferencyjny, 300x100x77 (74cm konstrukcja + 3 cm blat)
 UWAGA: MOŻLIWOŚĆ REGULACJI WYS. W NÓŻKACH !
K: kontener mobilny pracowniczy 43x60x54
SZK: komoda konferencyjna 235x46x100



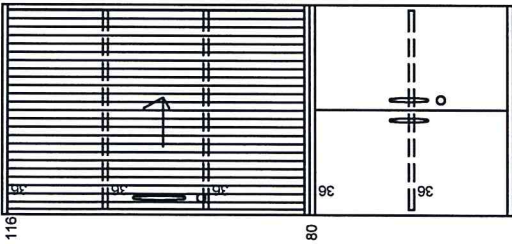
SZK

N

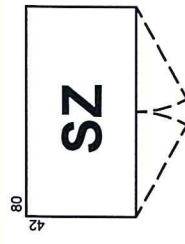
40 (+196 =236)



196



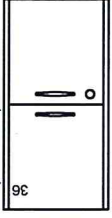
80



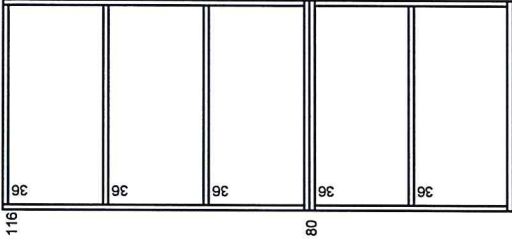
80

SZ**N**

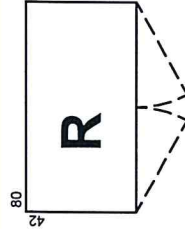
40 (+196 =236)



196



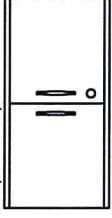
80



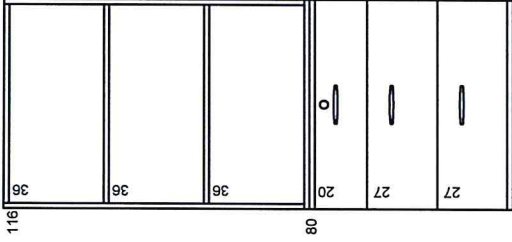
80

R**N**

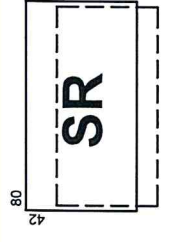
40 (+196 =236)



196



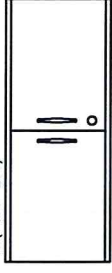
80



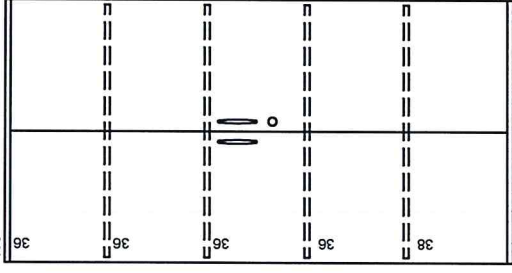
80

SR**N1**

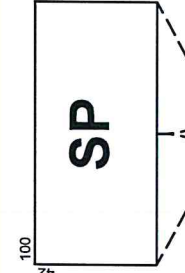
40 (+196 =236)



196



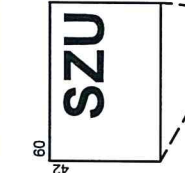
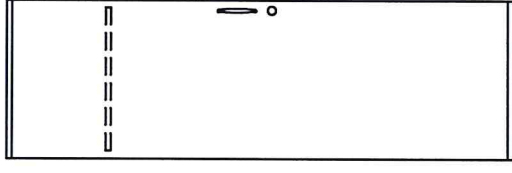
38



100

SP**N2**

40 (+196 =236)



60

SZU**SZ:** szafa aktowa pracownicza 80x42

2OH skrzydło + 3OH żaluzja akust. + 1OH skrzydło

SZ1: szafa aktowa pracownicza 80x42

2OH skrzydło

SZ2: szafa aktowa pracownicza 80x60

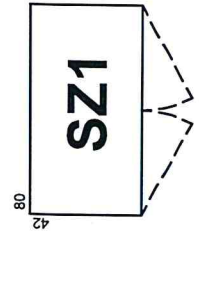
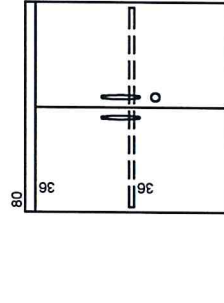
3x szuflada

SZU: szafa ubraniowa pracownicza 60x42**SR:** regał z szufladami. 80x42

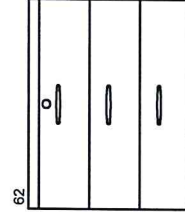
3 szuflady + wysuwana półka+półki

SP: szafa aktowa z drzwiami otwieranymi

100x42

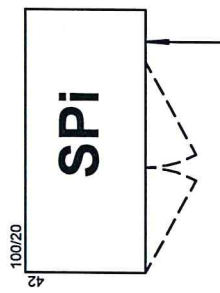
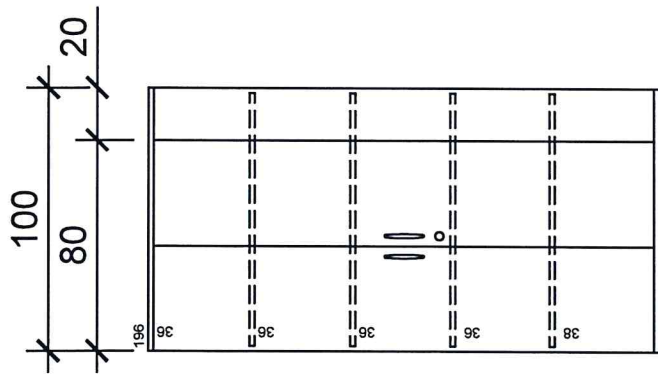
N, N1, N2: nadstawki

80

SZ1

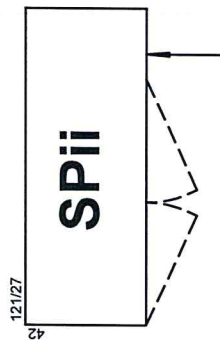
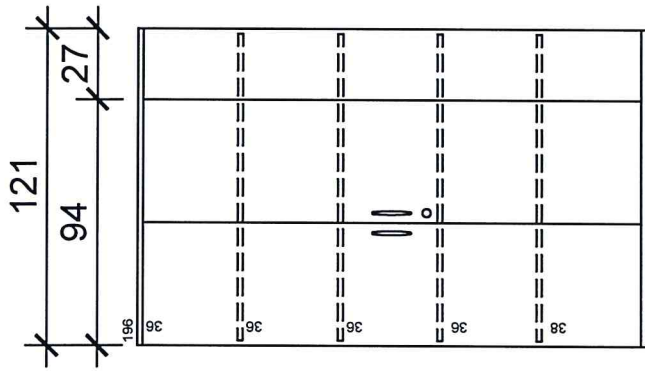
80

SZ2

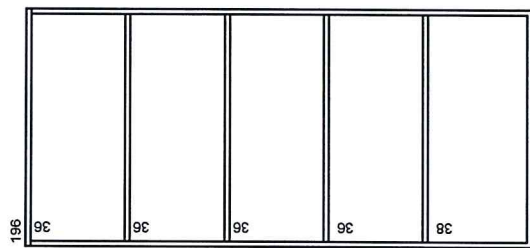


BLENDĄ O SZEROK. 20 CM. SZAFKĘ Należy spasać z szafą SZU (patrz rys pok 329)

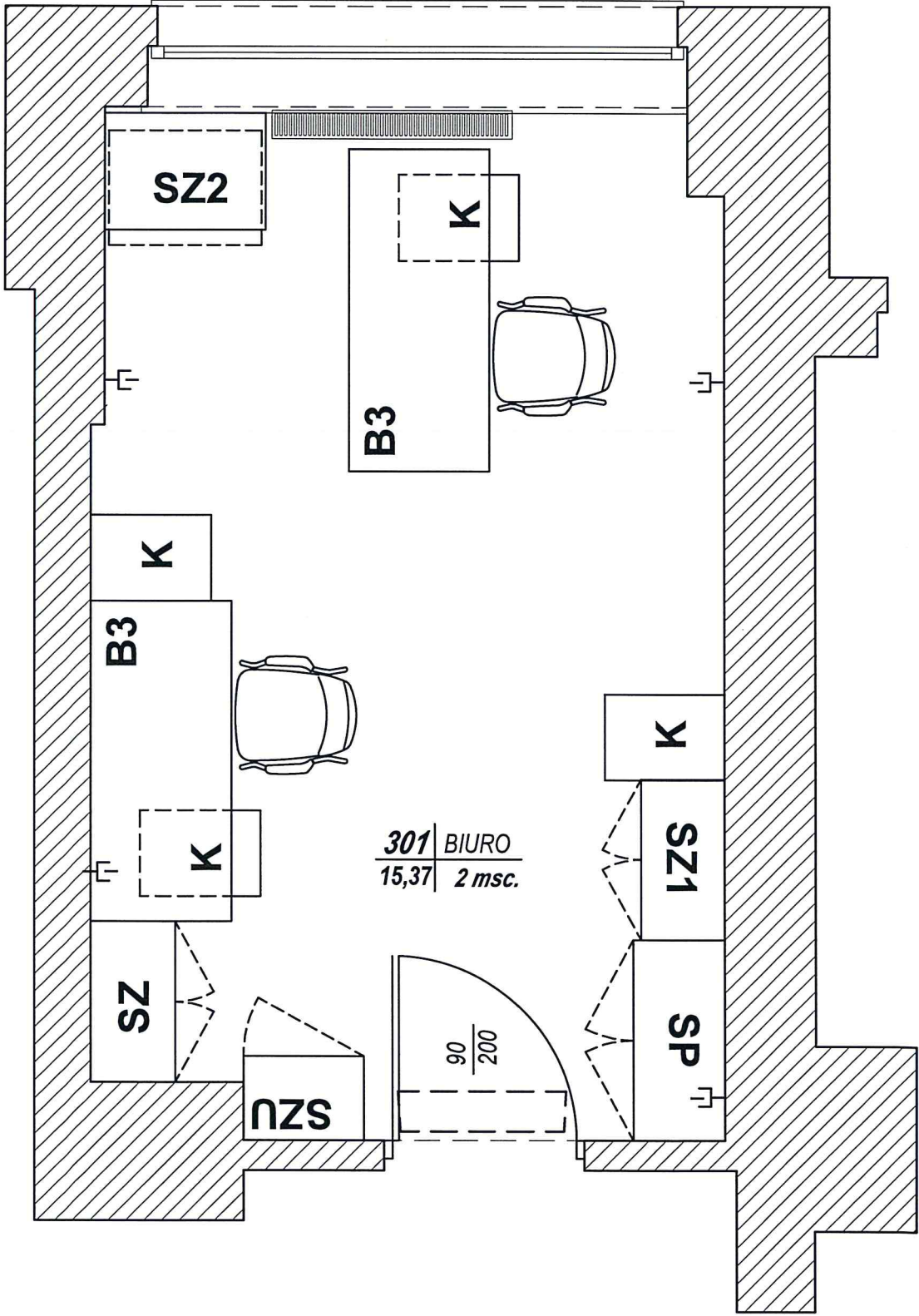
SPI : szafa aktowa z drzwiami otwieranymi 100/80x42
SPIi : szafa aktowa z drzwiami otwieranymi 121/94x42
Rk: regał z półkami na książki z plecami. Konieczność wykonania konstrukcji, która nie przewróci - spowoduje stabilizację regatu, 90x32x189,8

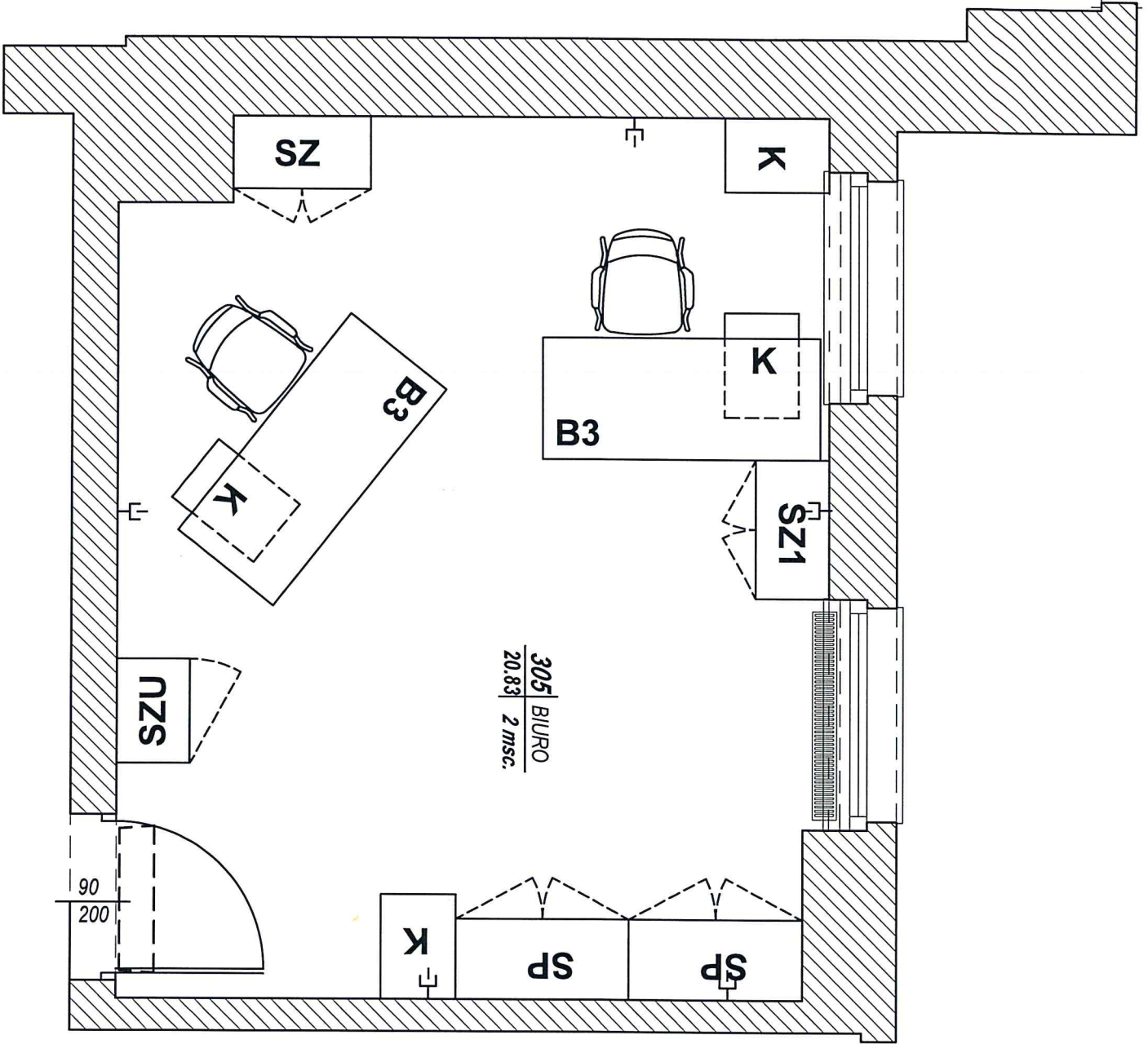


BLENDĄ O SZEROK. 27 CM. SZAFKĘ Należy spasać do rzeczywistych wymiarów ściany(patrz rys pok 329)

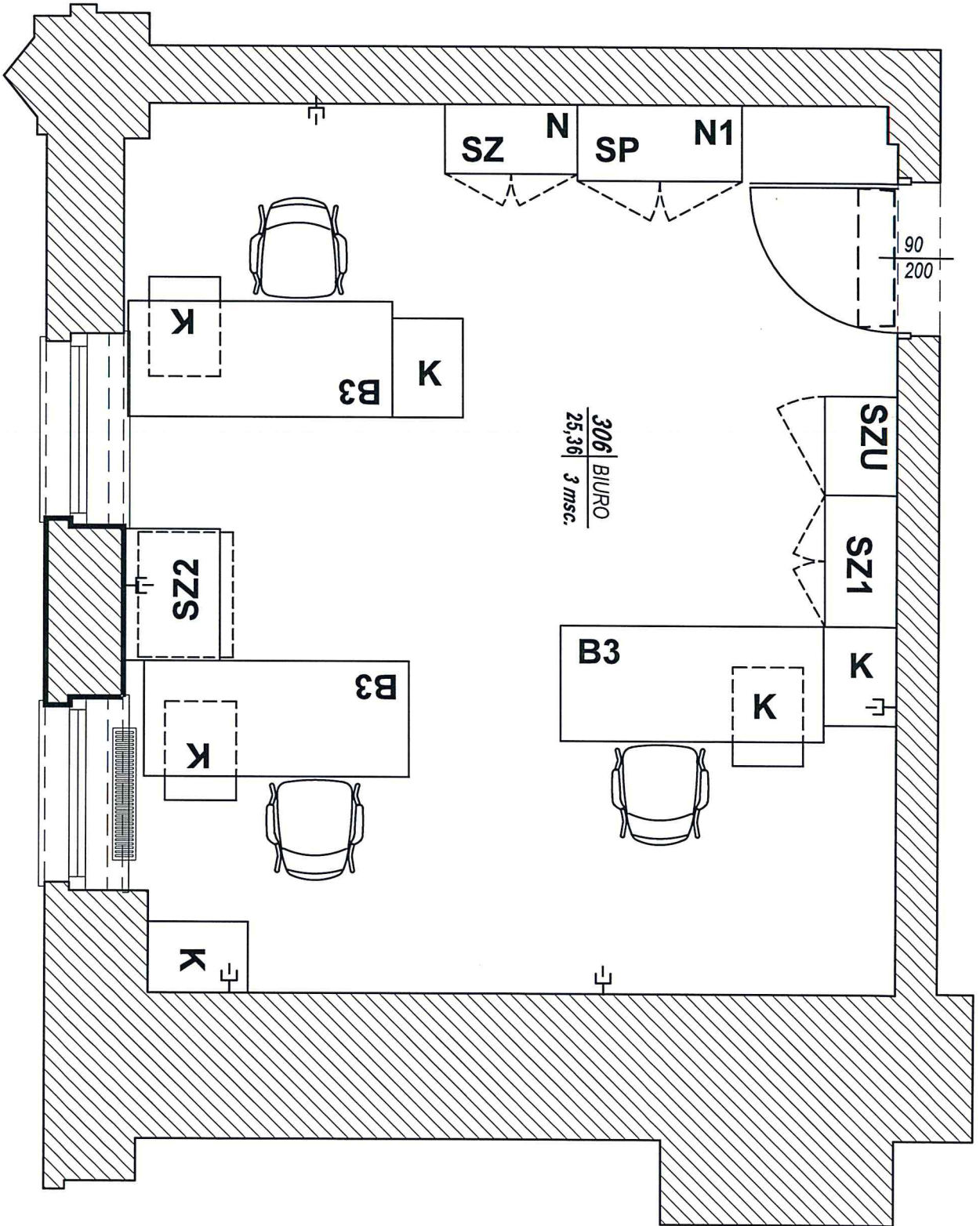


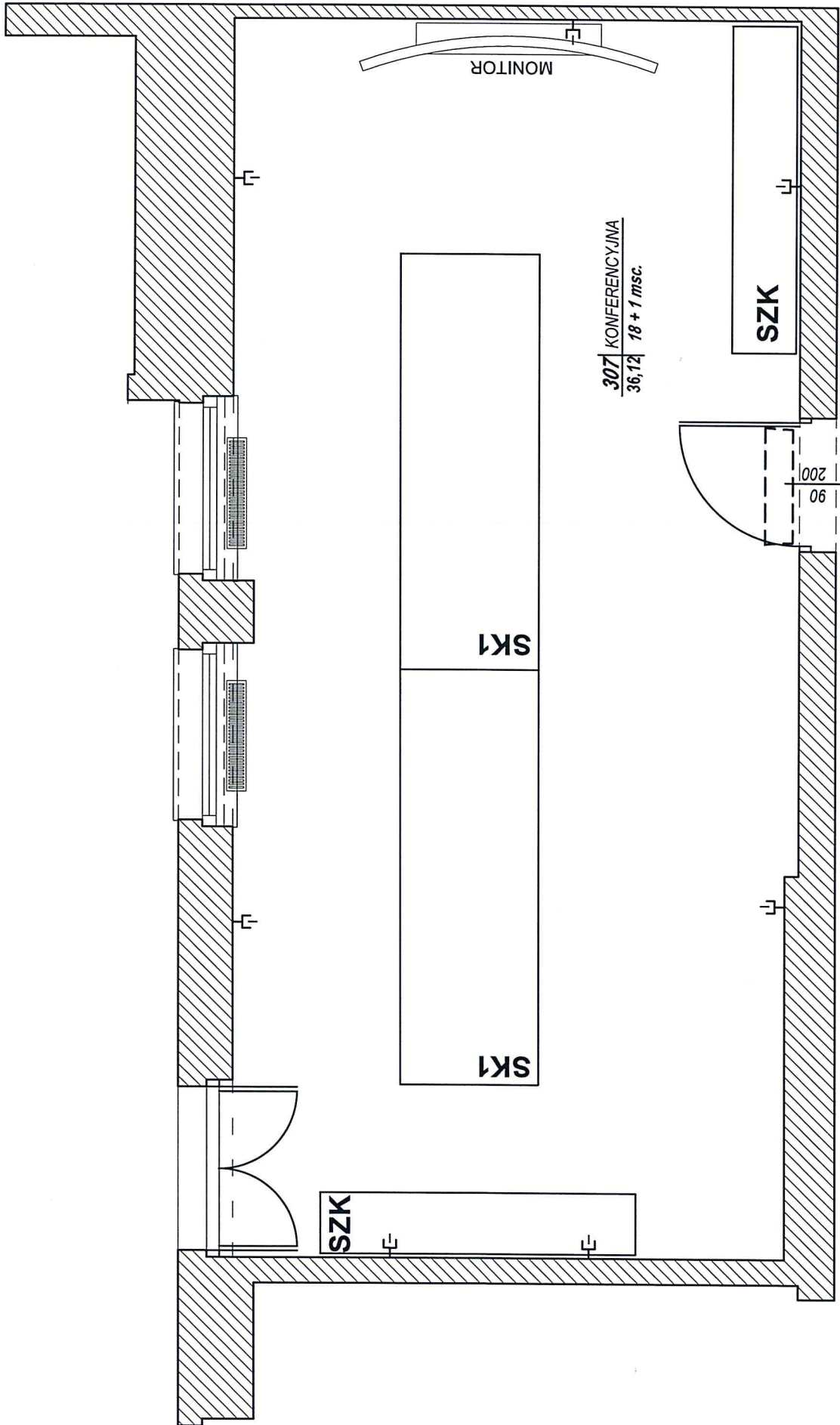
SPI : szafa aktowa z drzwiami otwieranymi 100/80x42
SPIi : szafa aktowa z drzwiami otwieranymi 121/94x42
Rk: regał z półkami na książki z plecami. Konieczność wykonania konstrukcji, która nie przewróci - spowoduje stabilizację regatu, 90x32x189,8

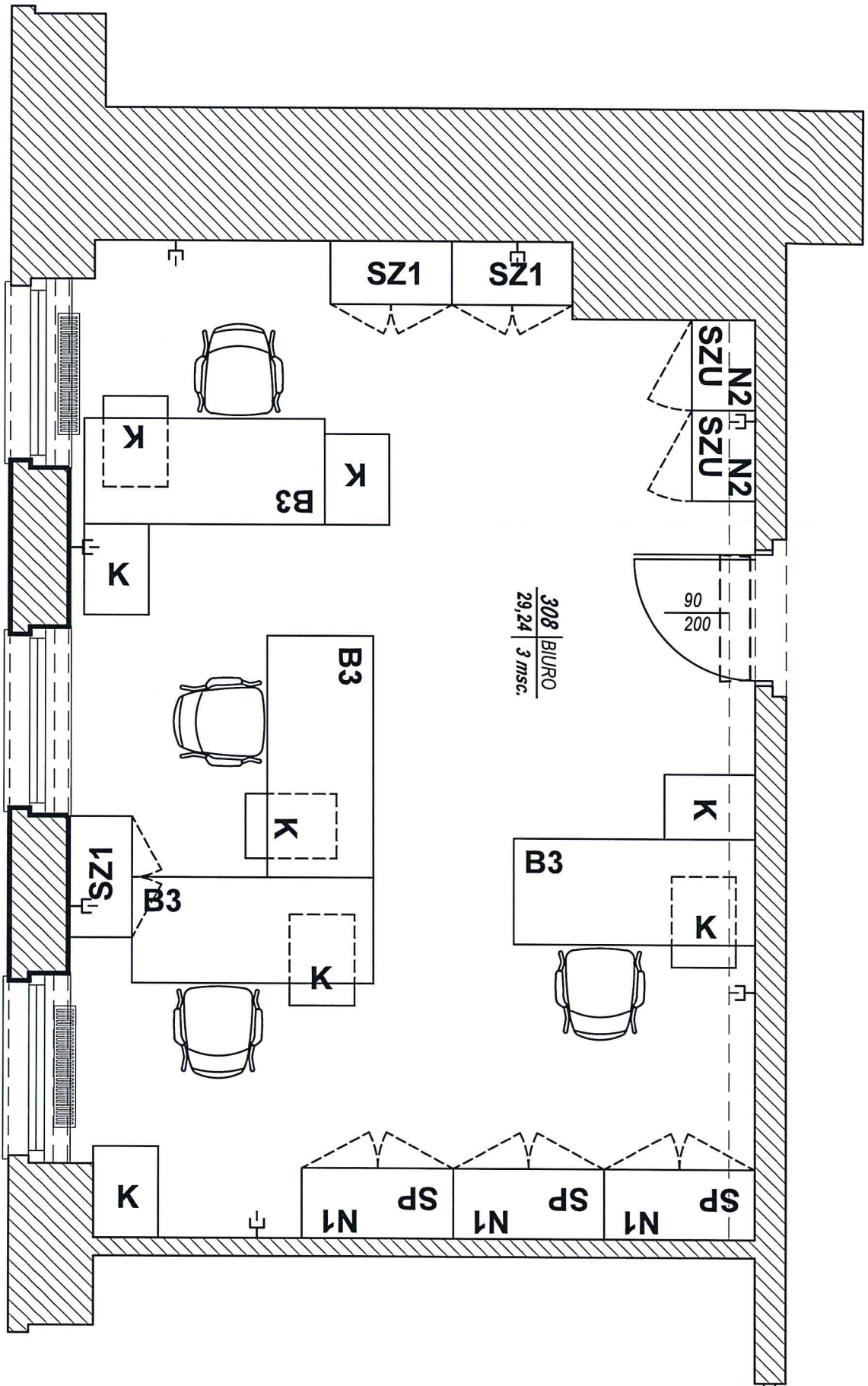


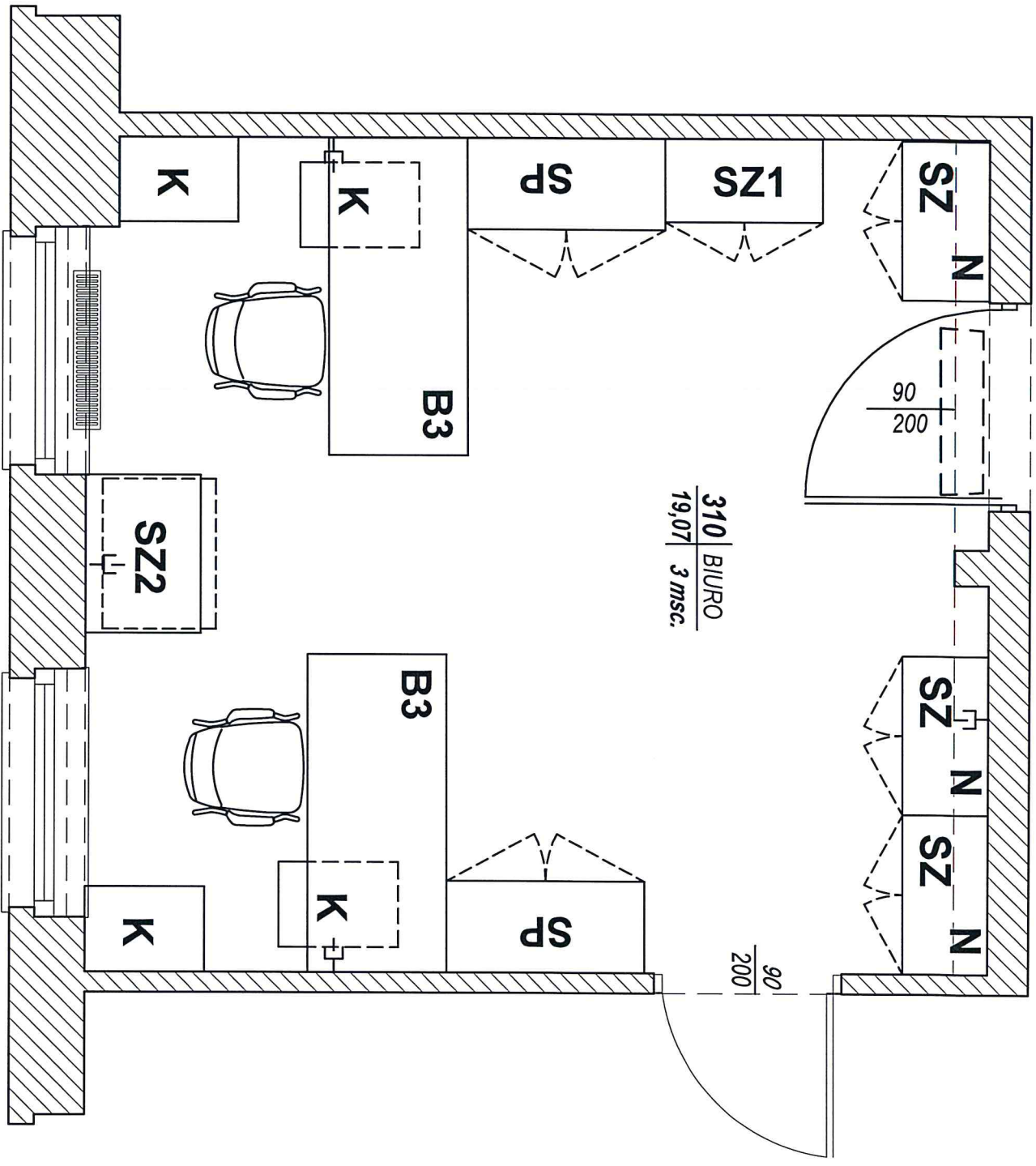


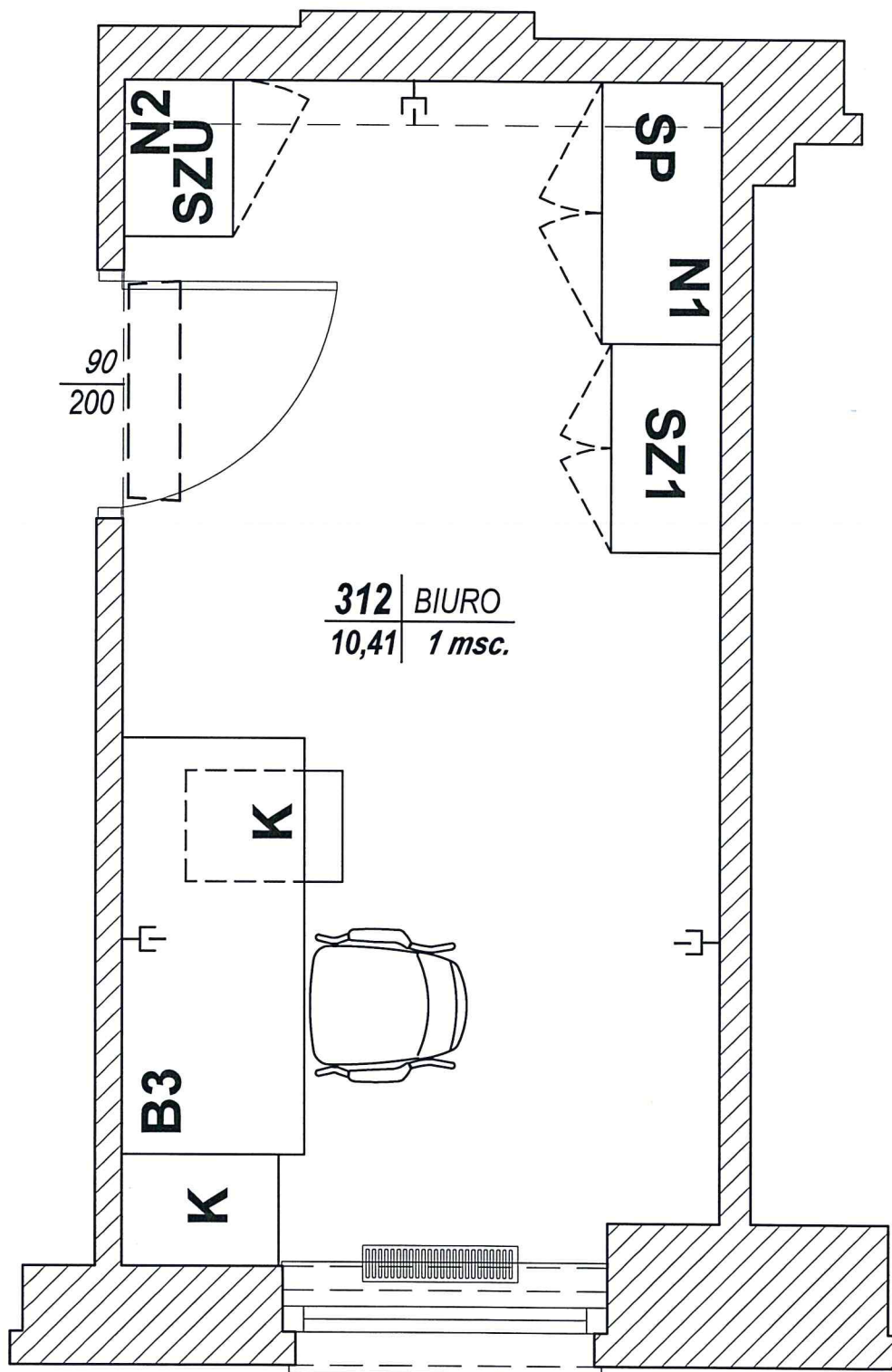
305 | BIURO
20.83 | 2 msc.

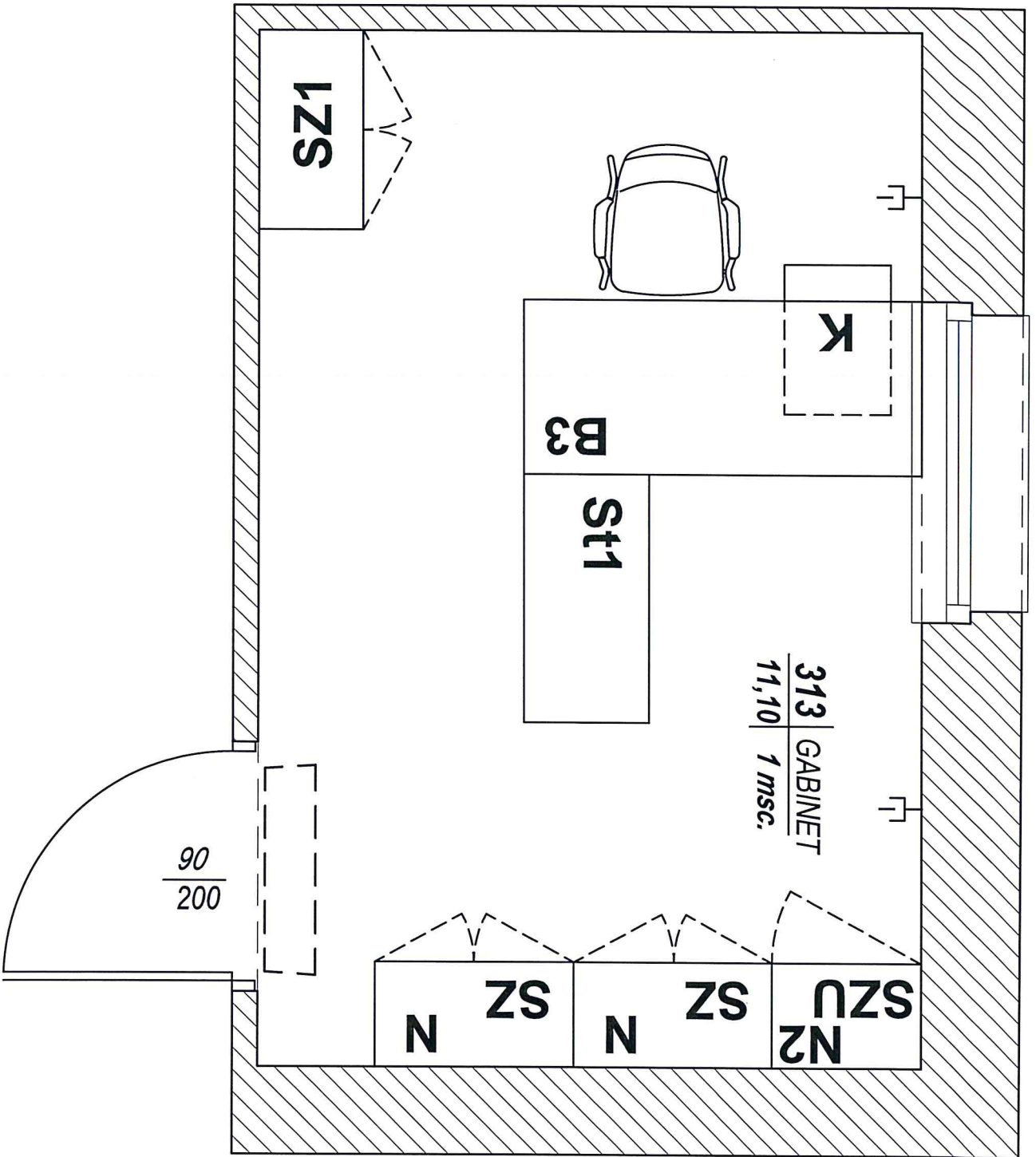


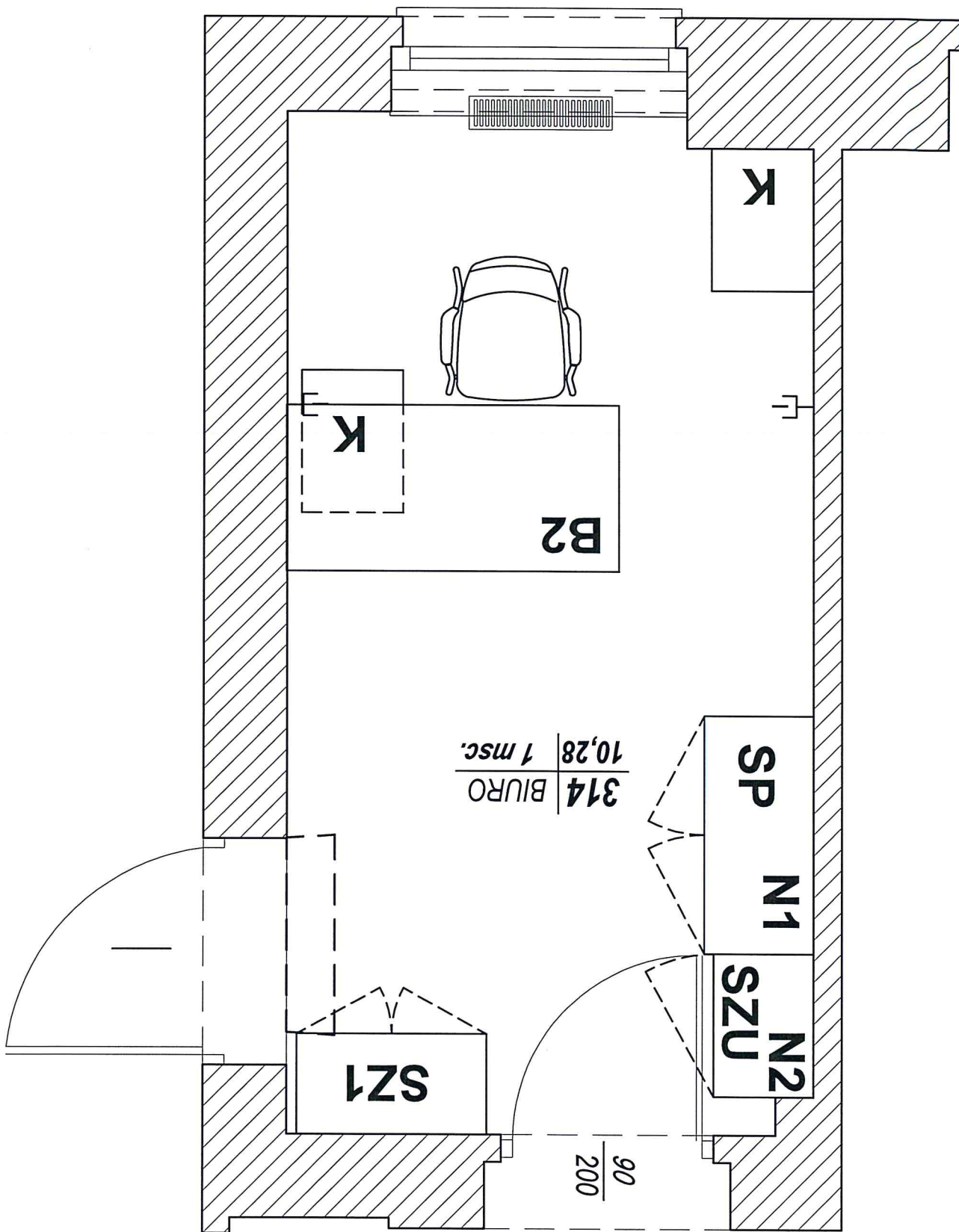


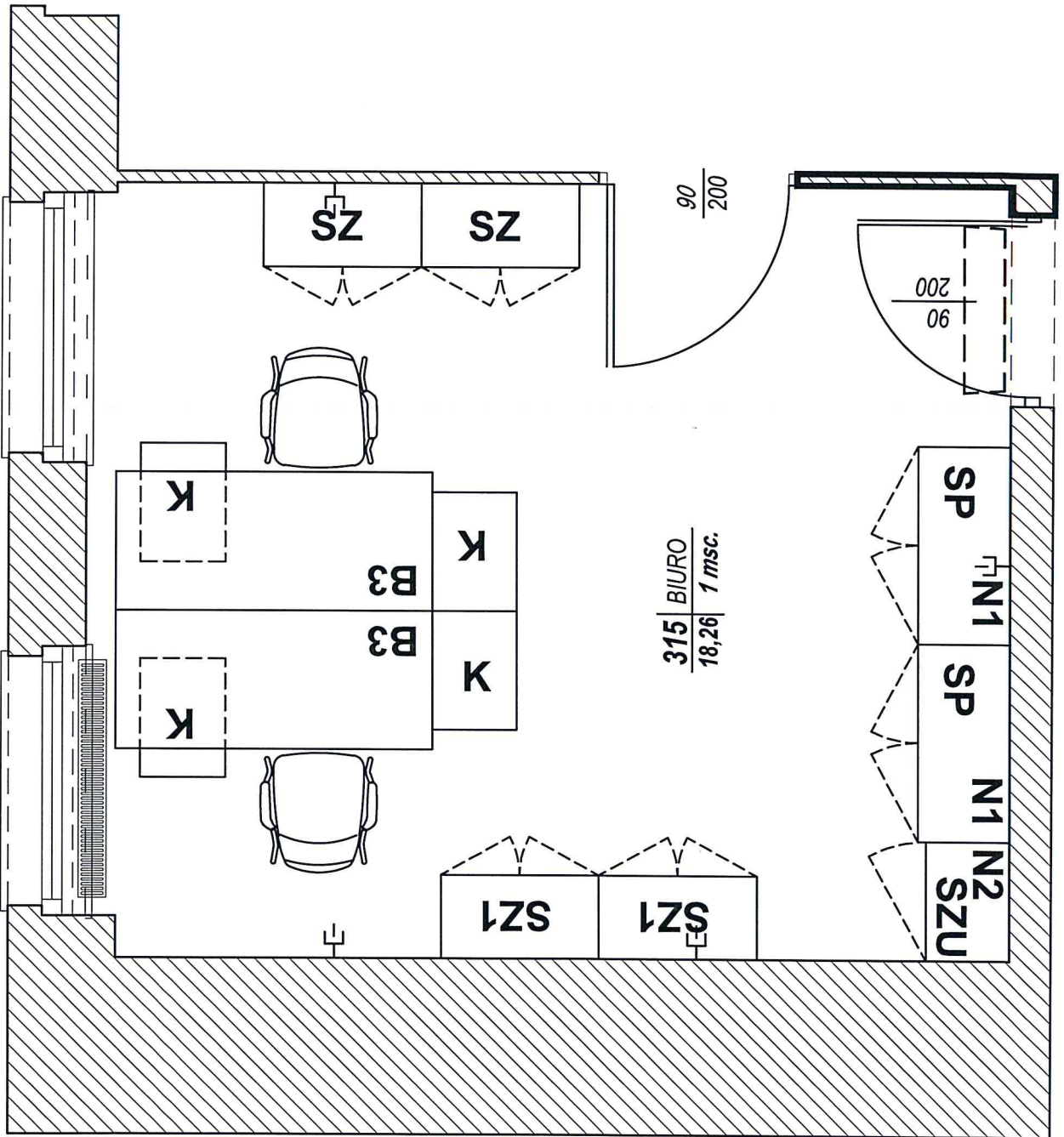


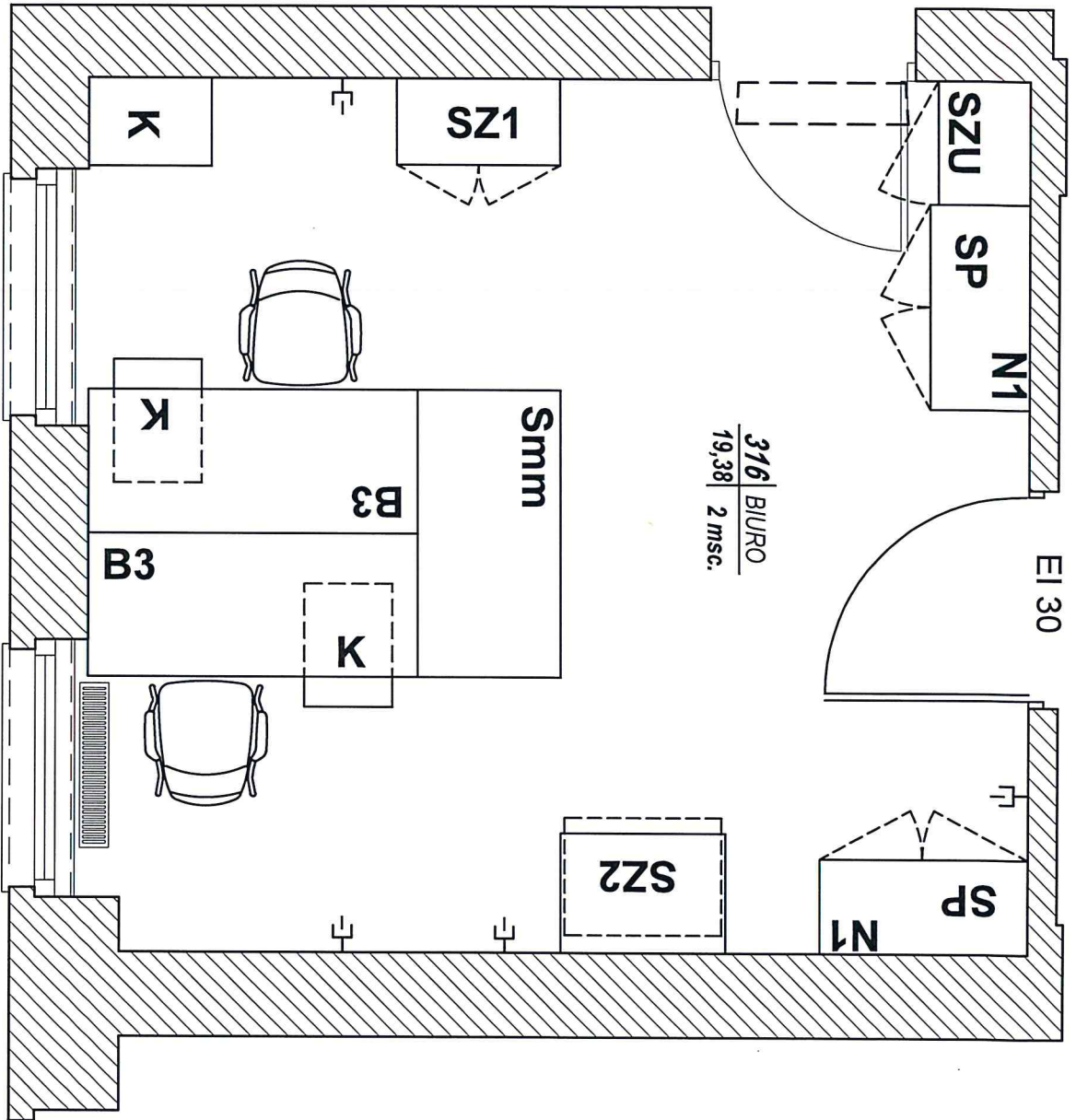


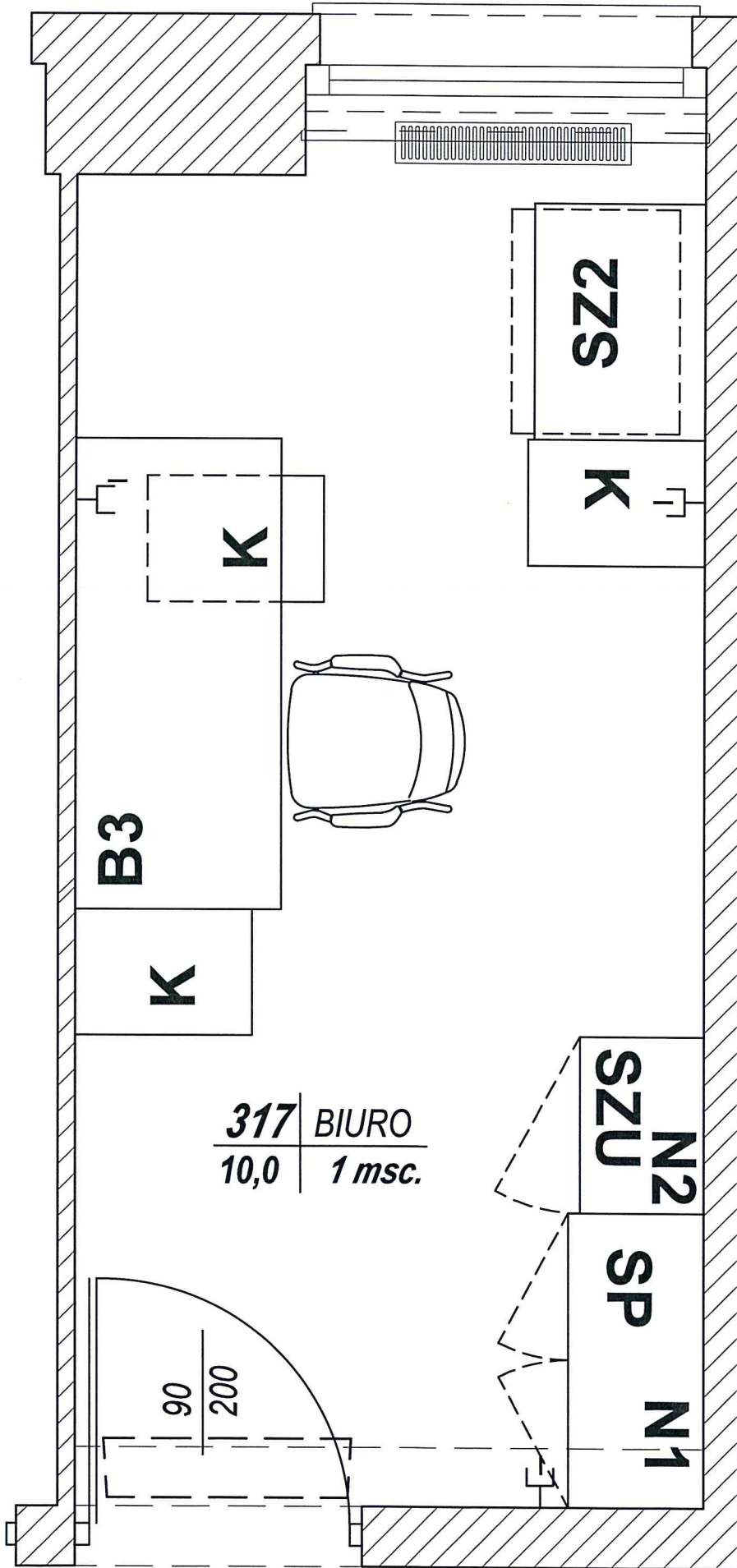


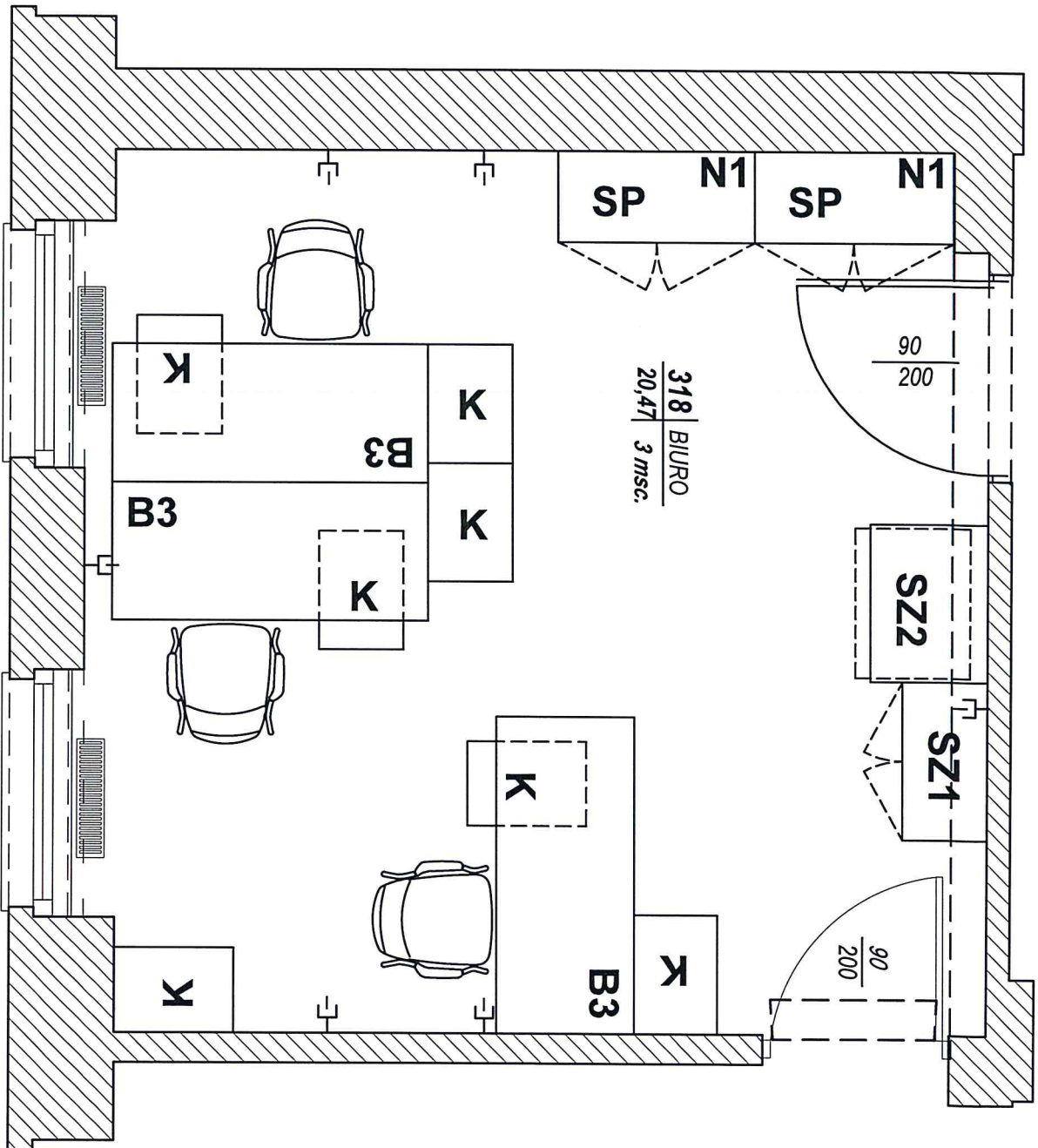


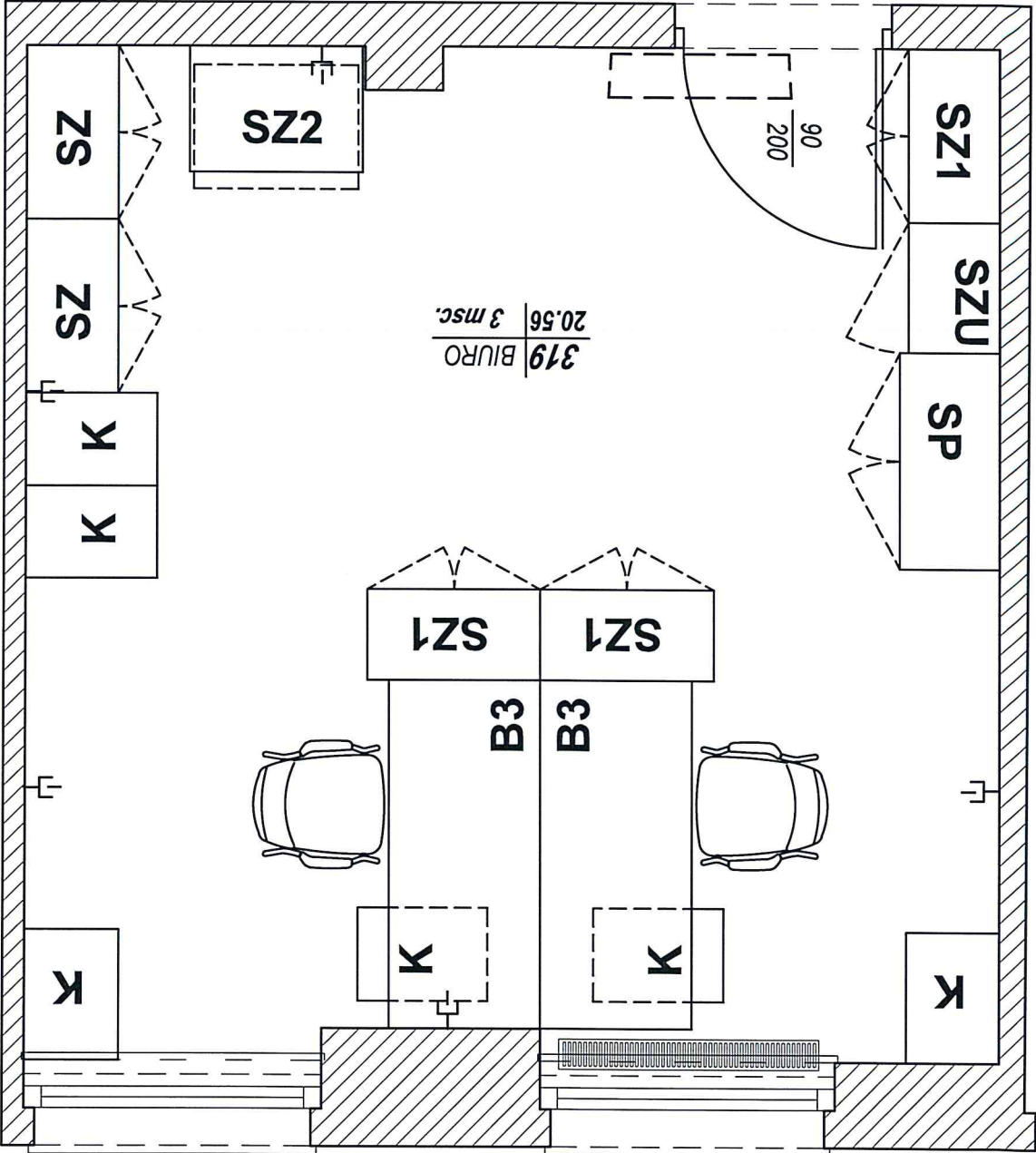


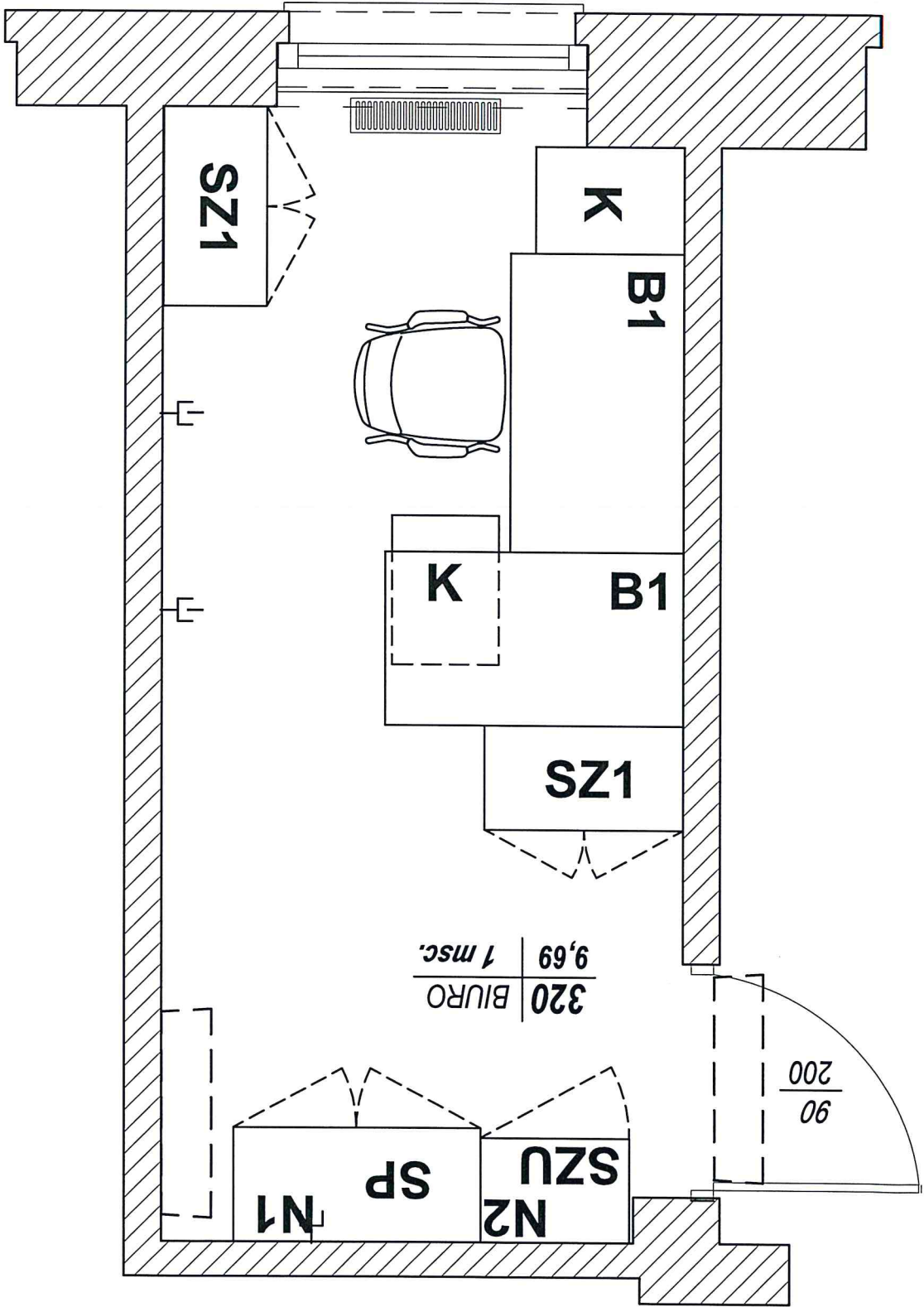


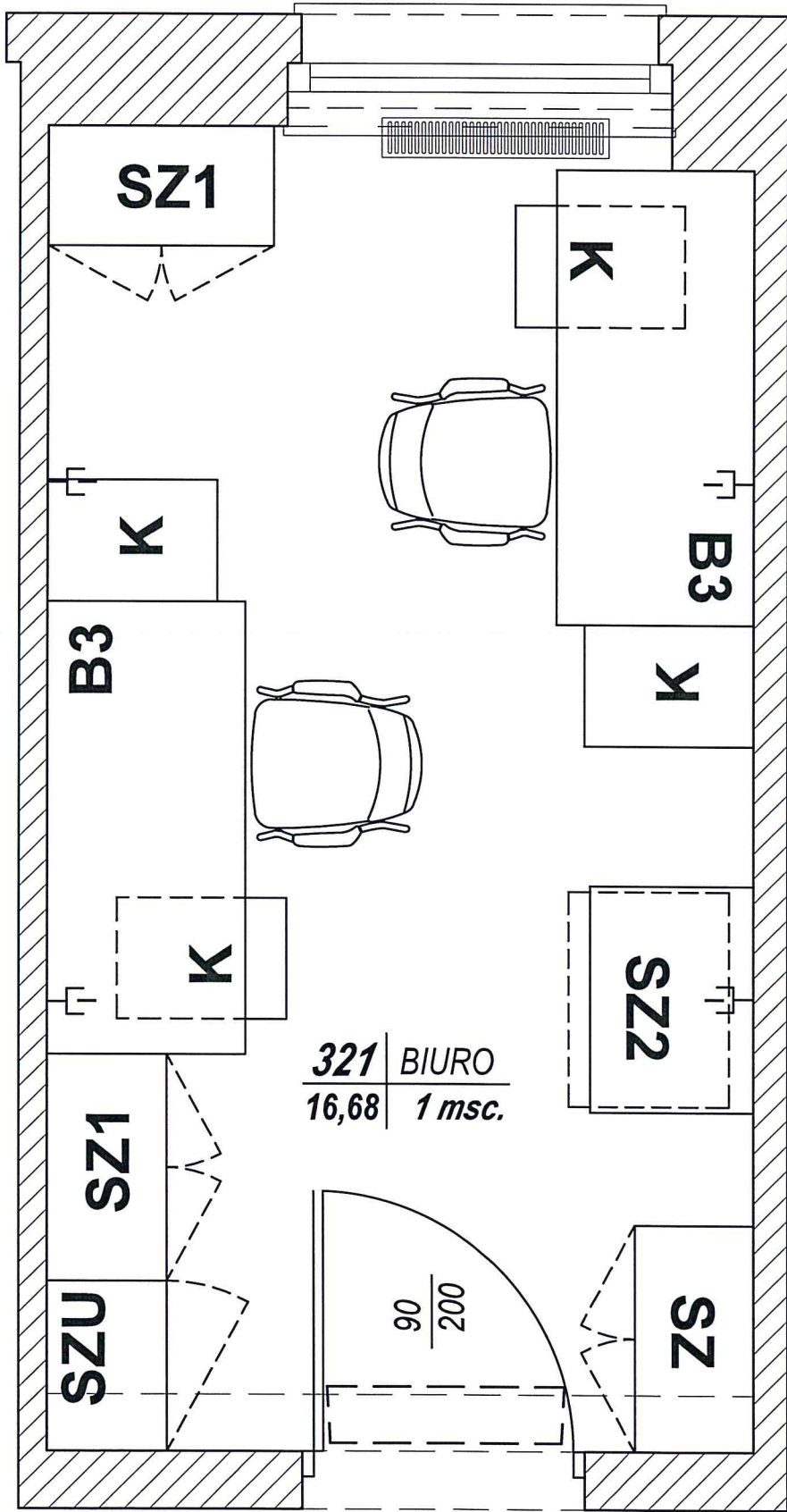


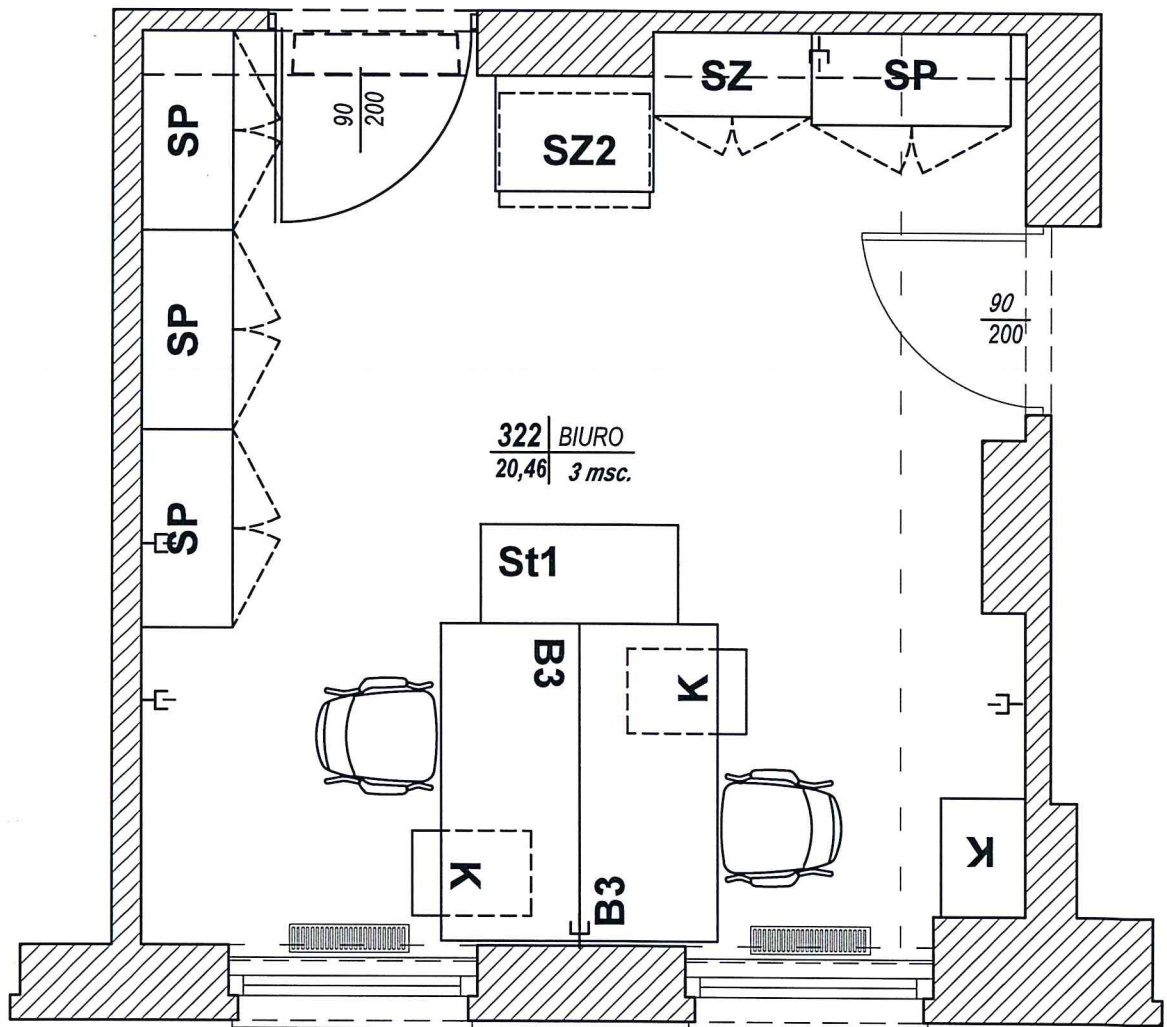


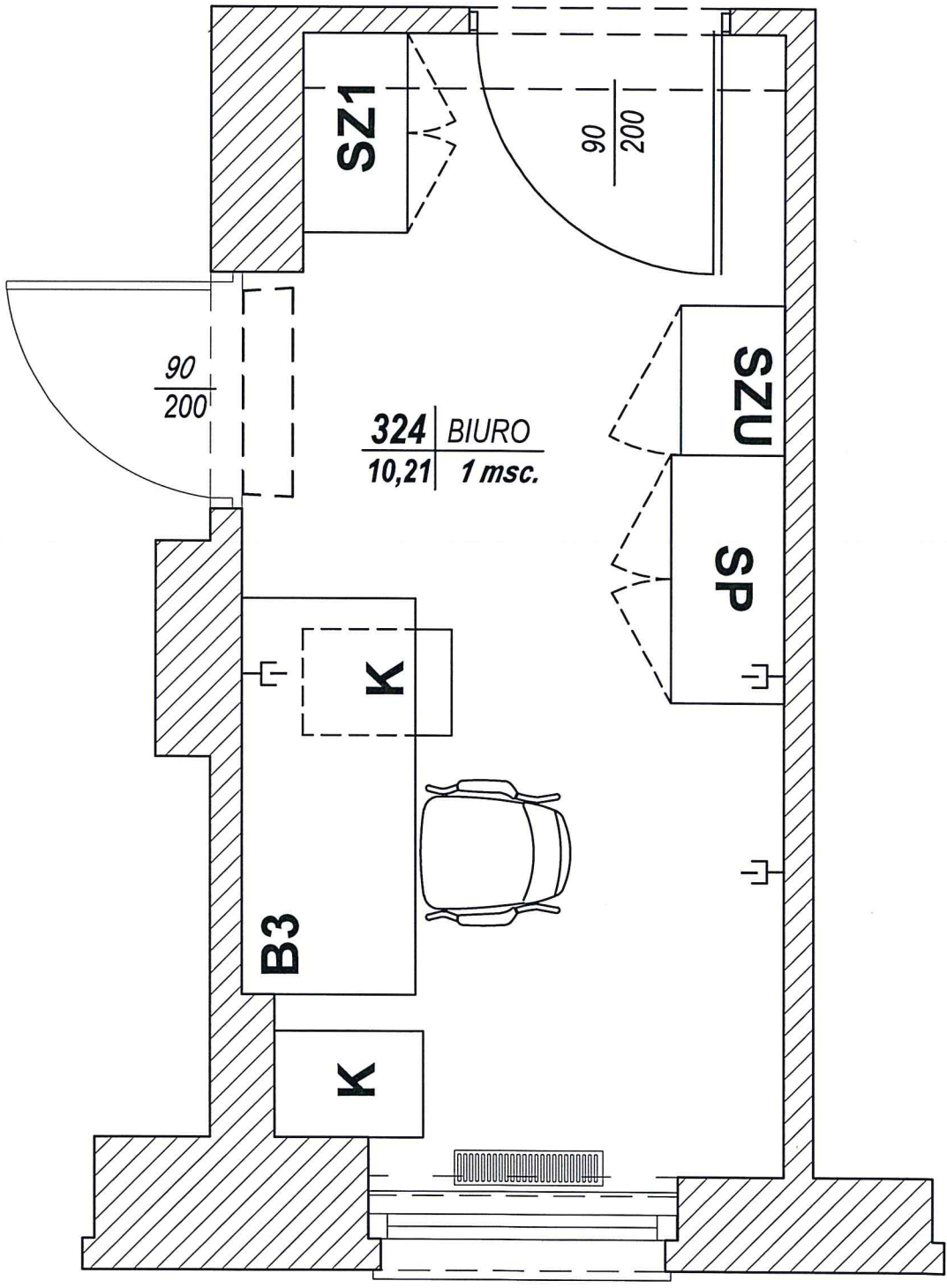


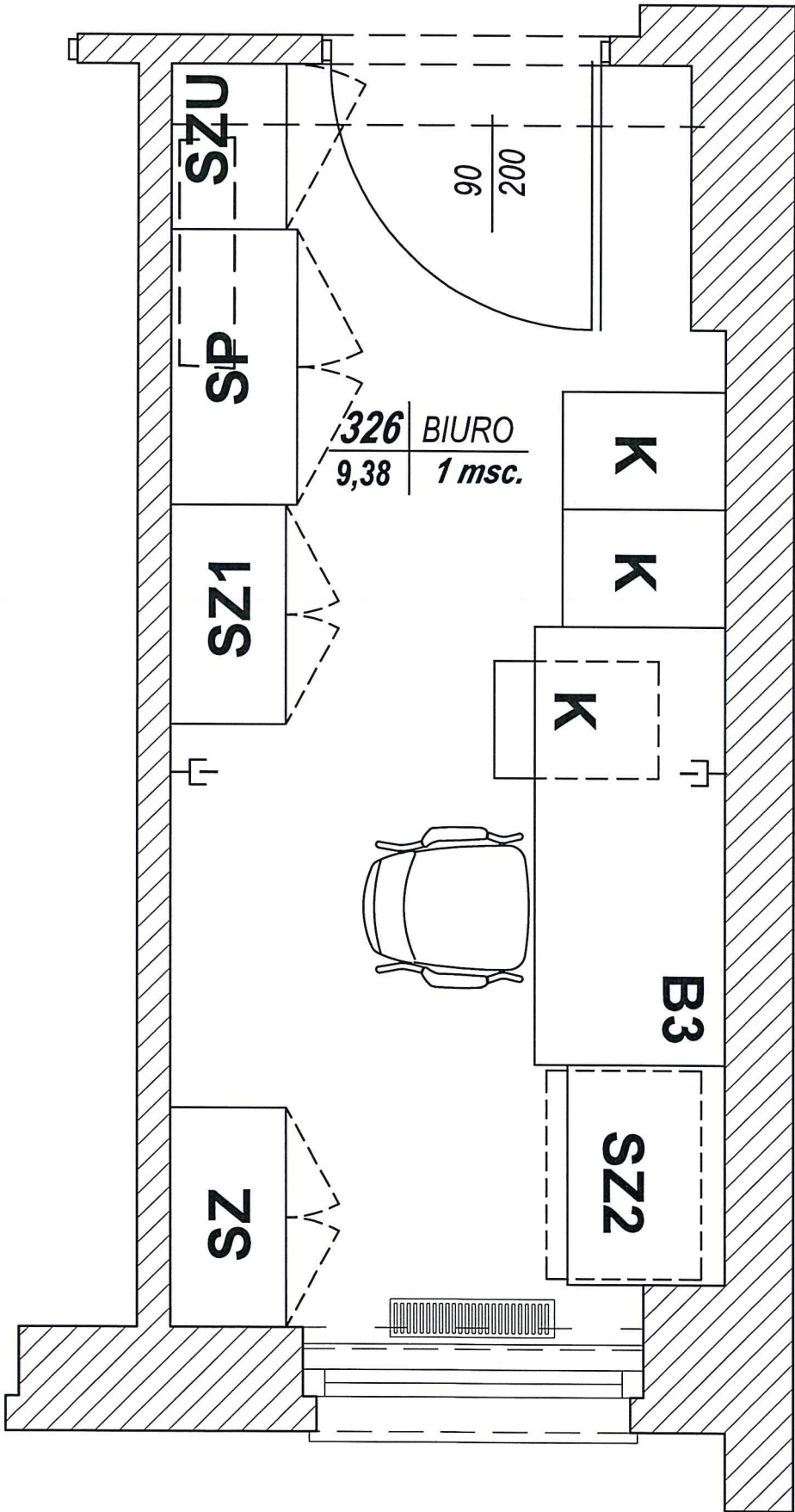


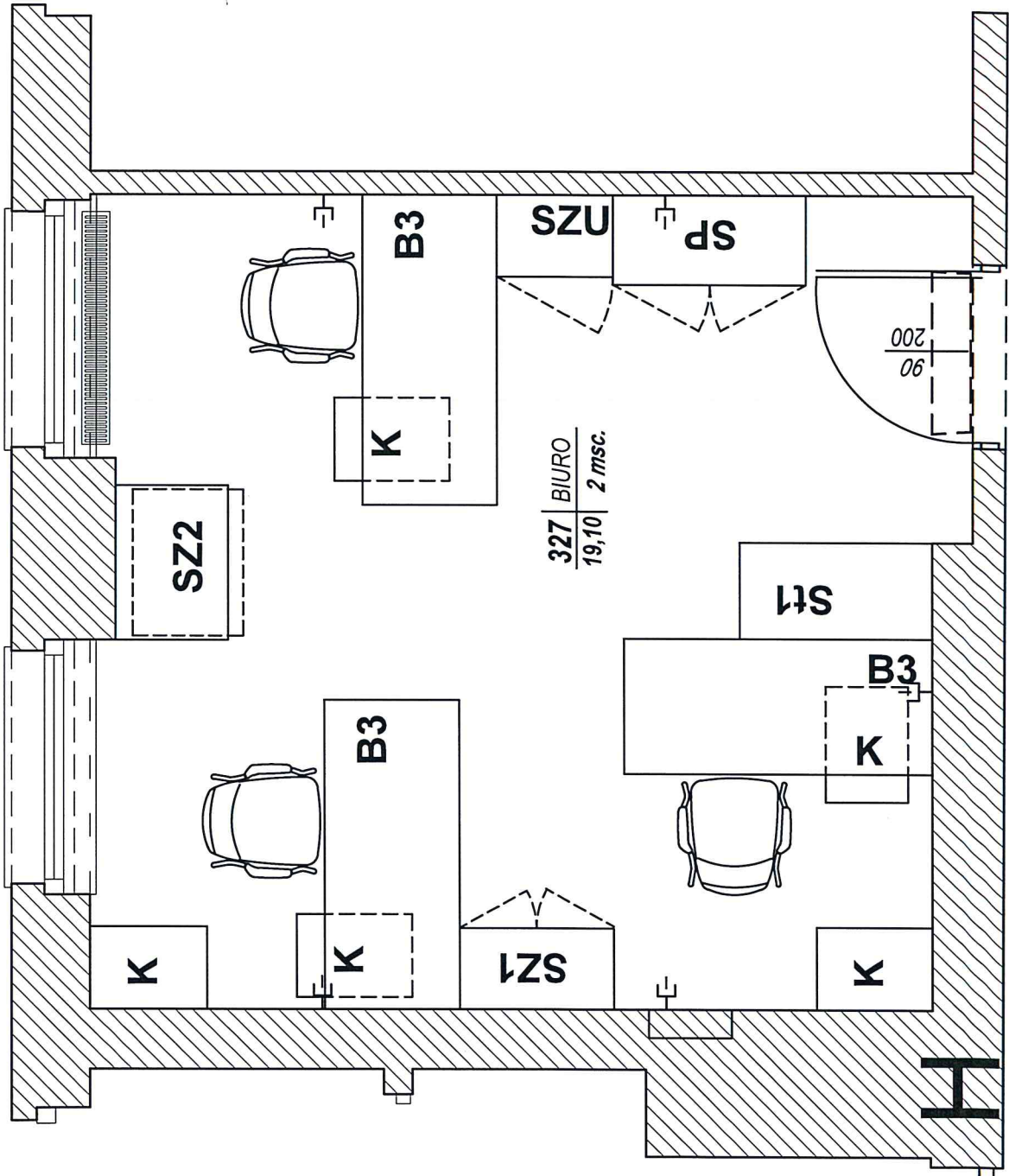


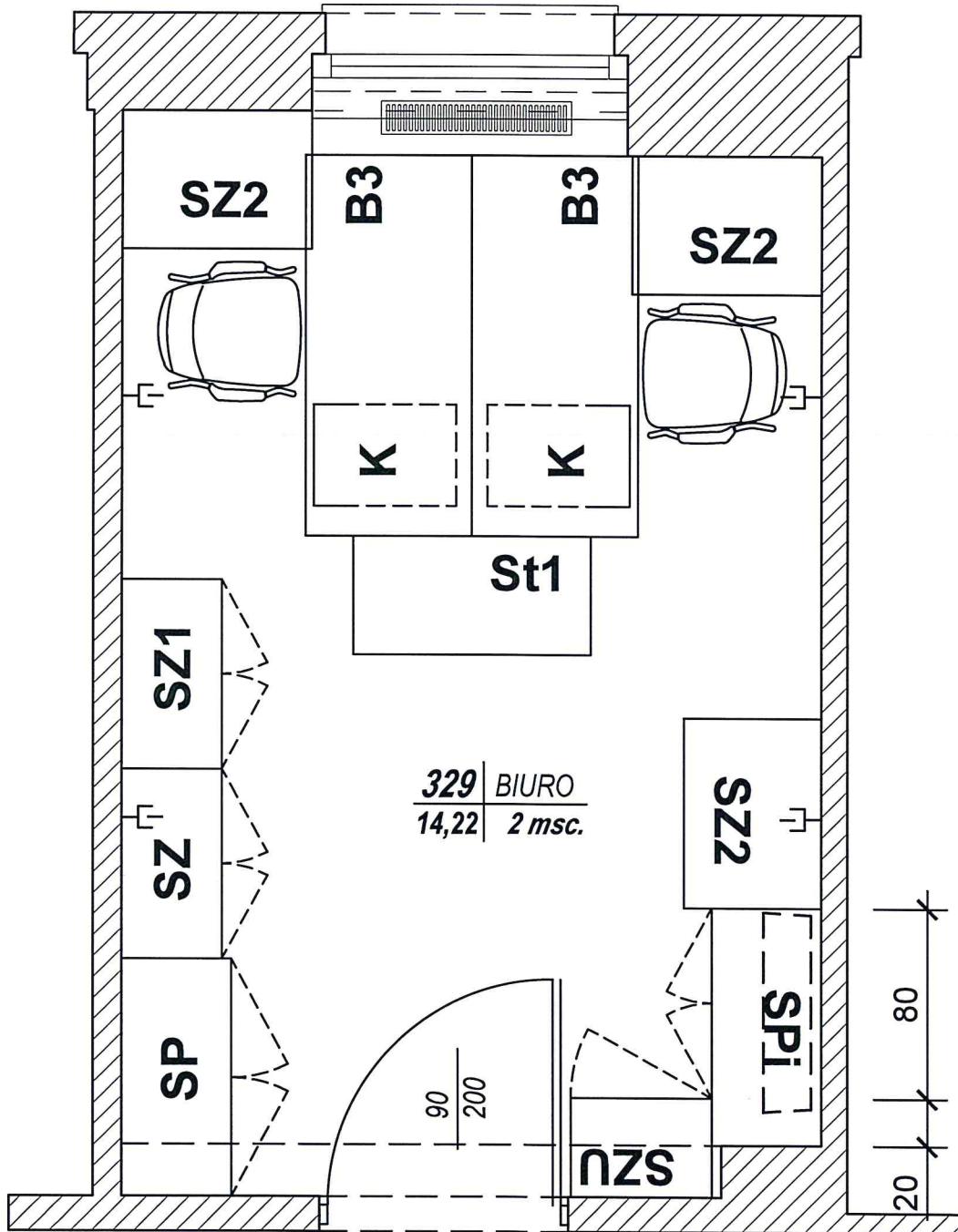


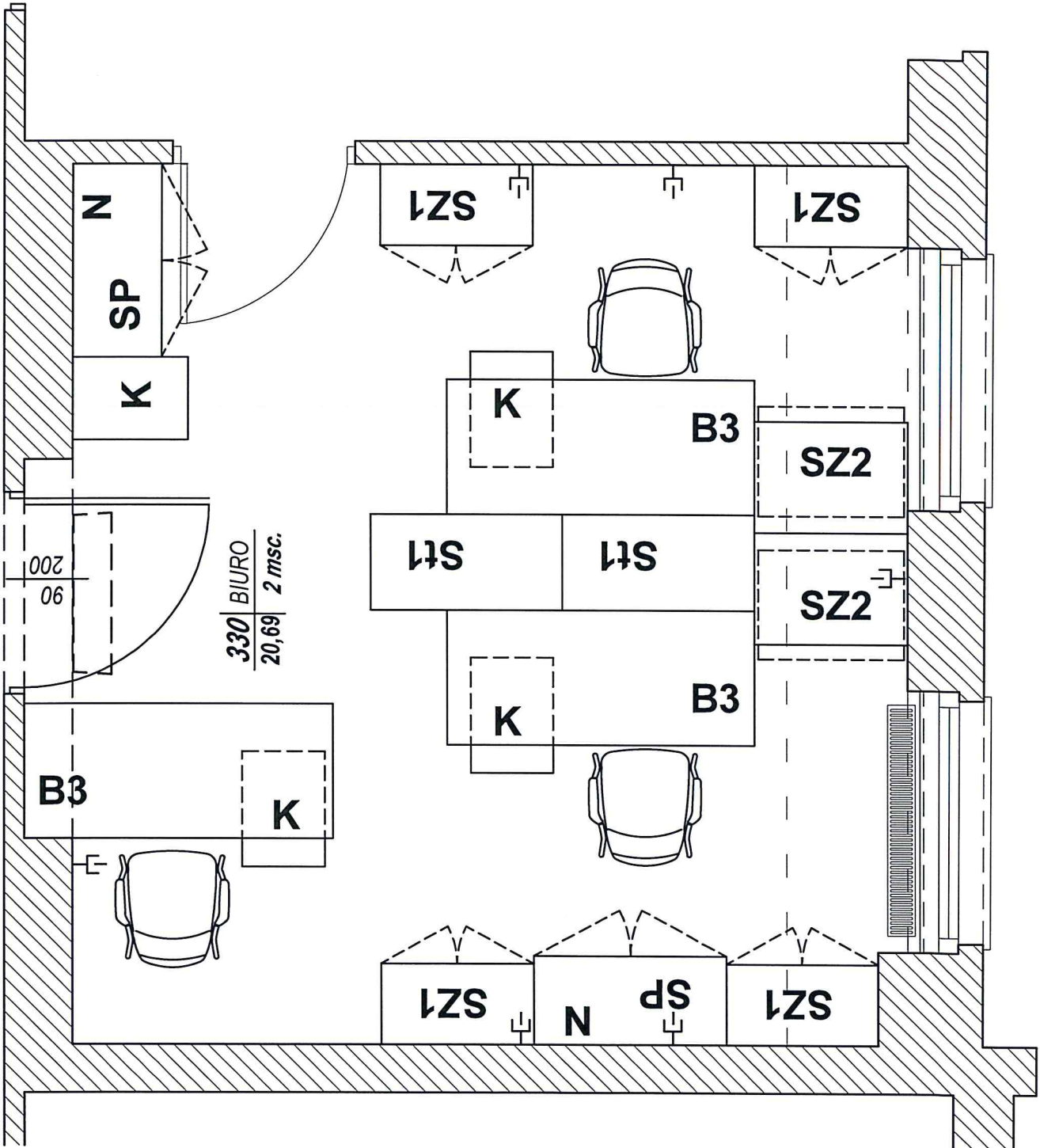


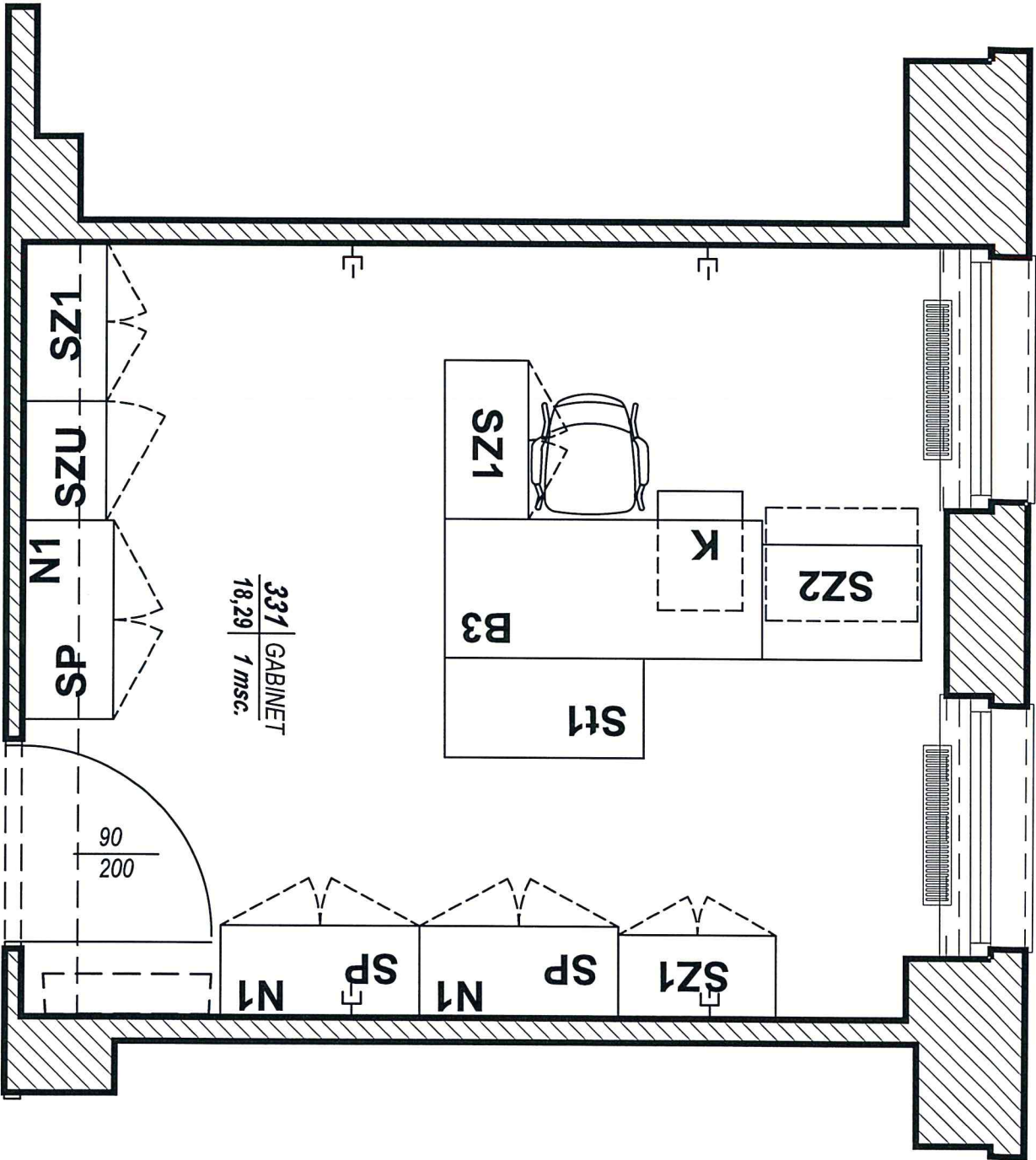


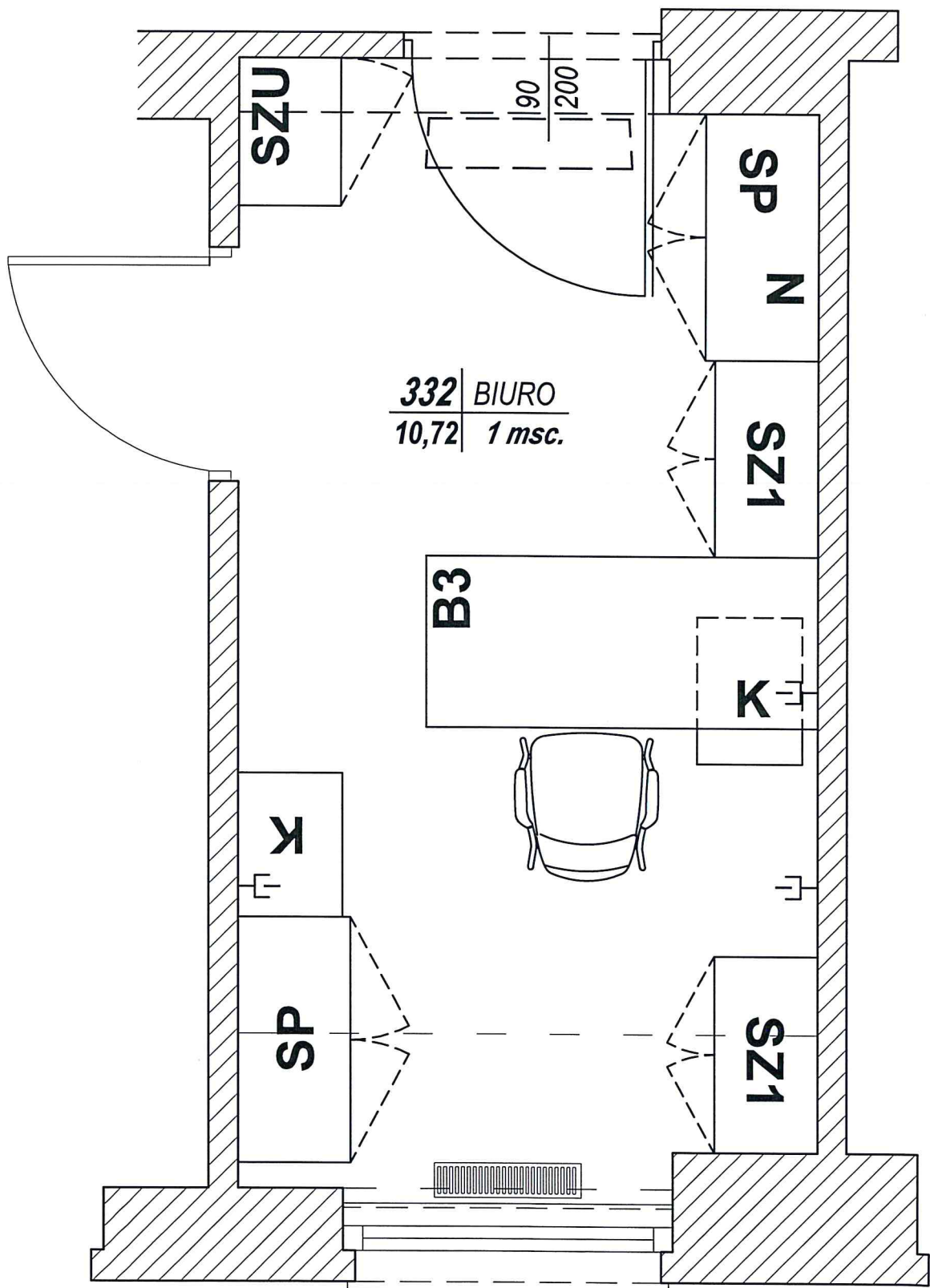




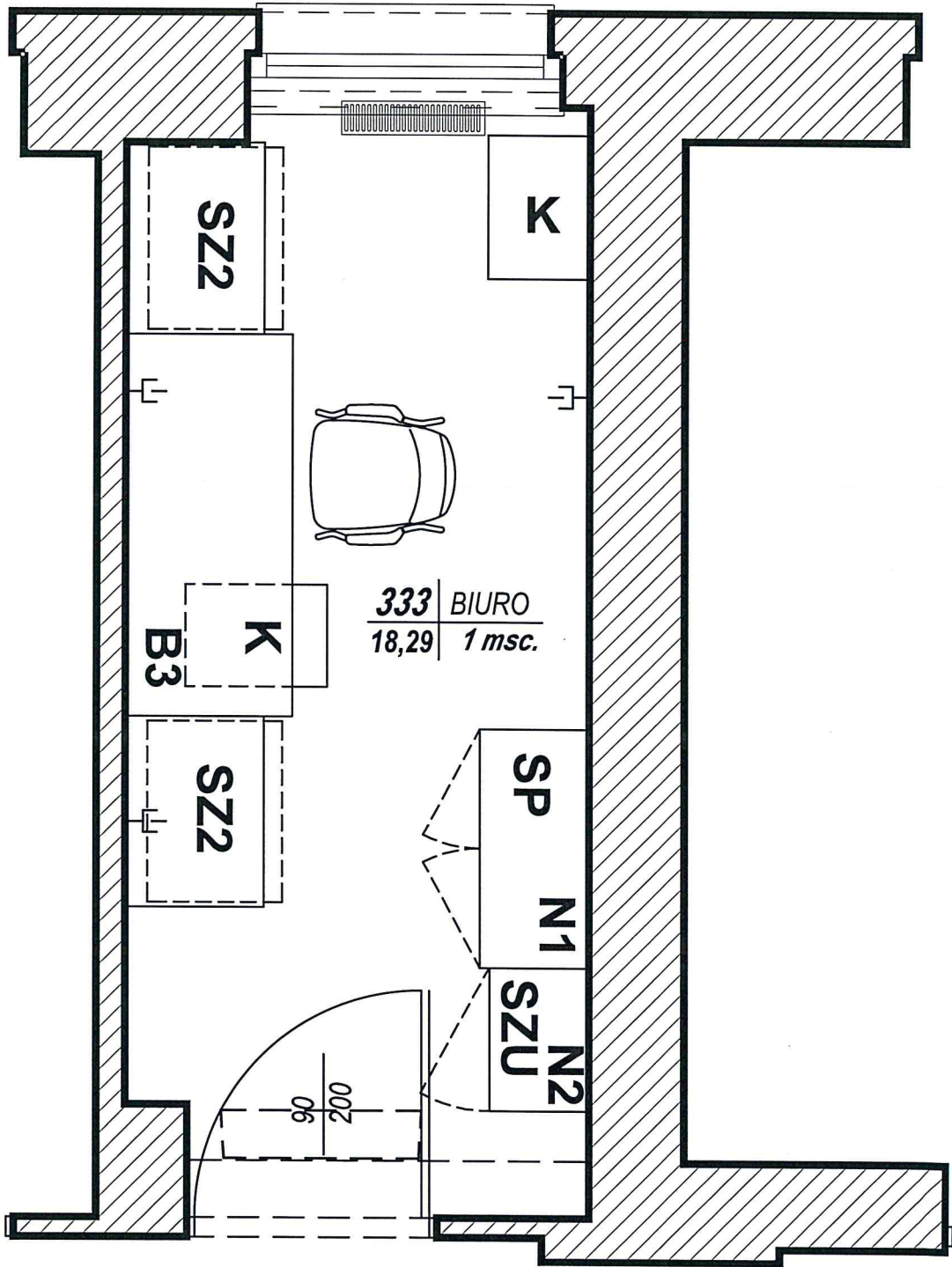


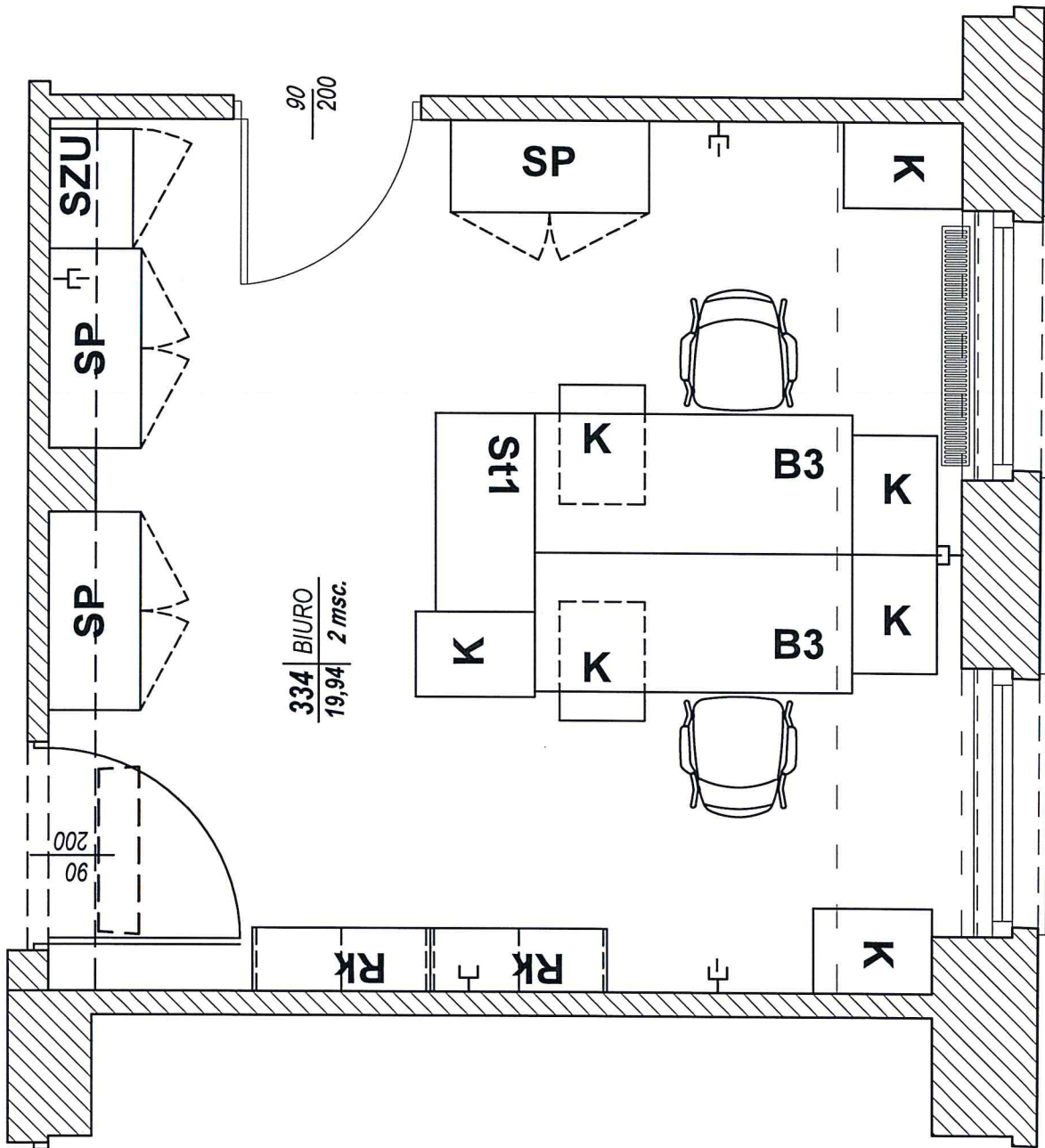


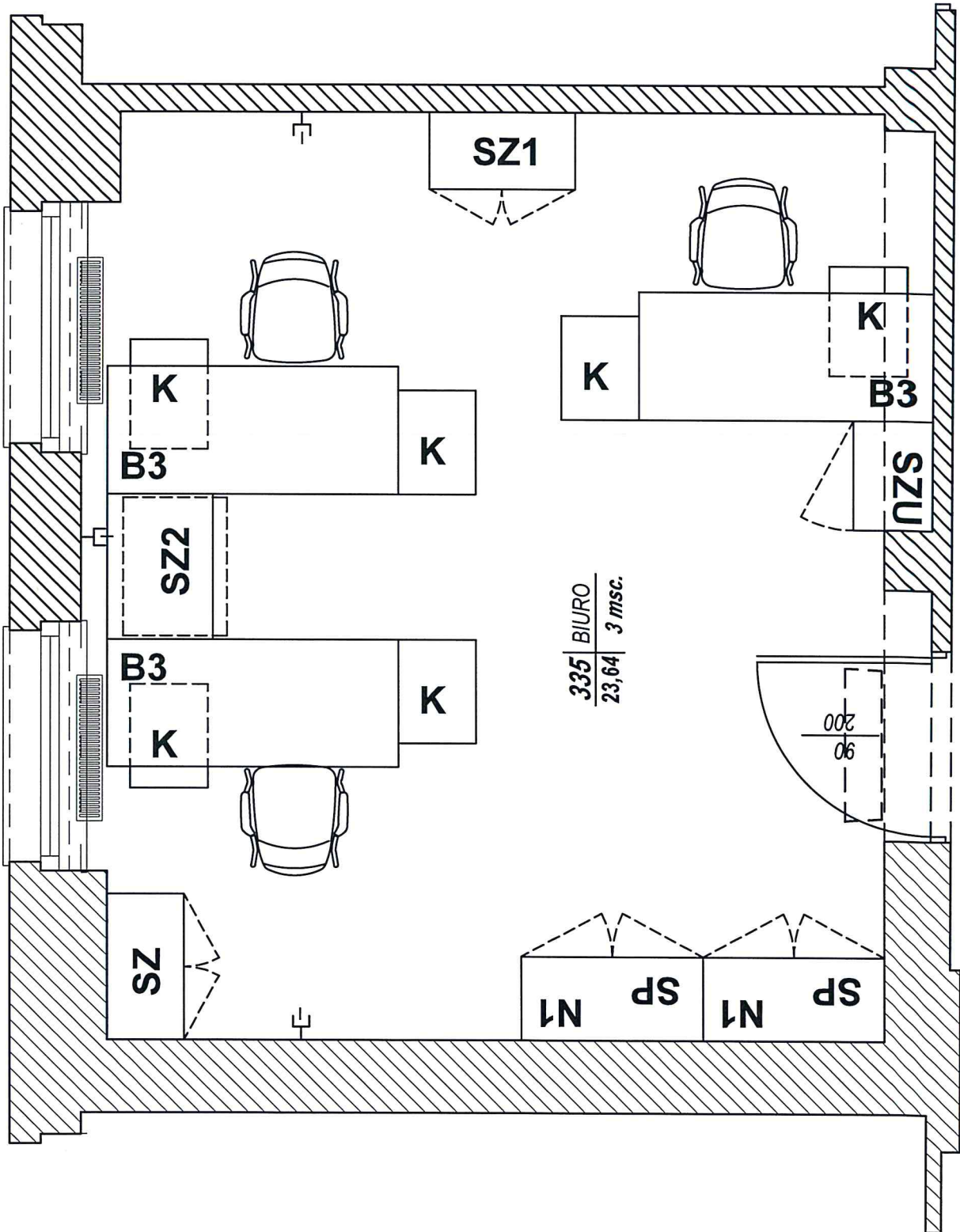




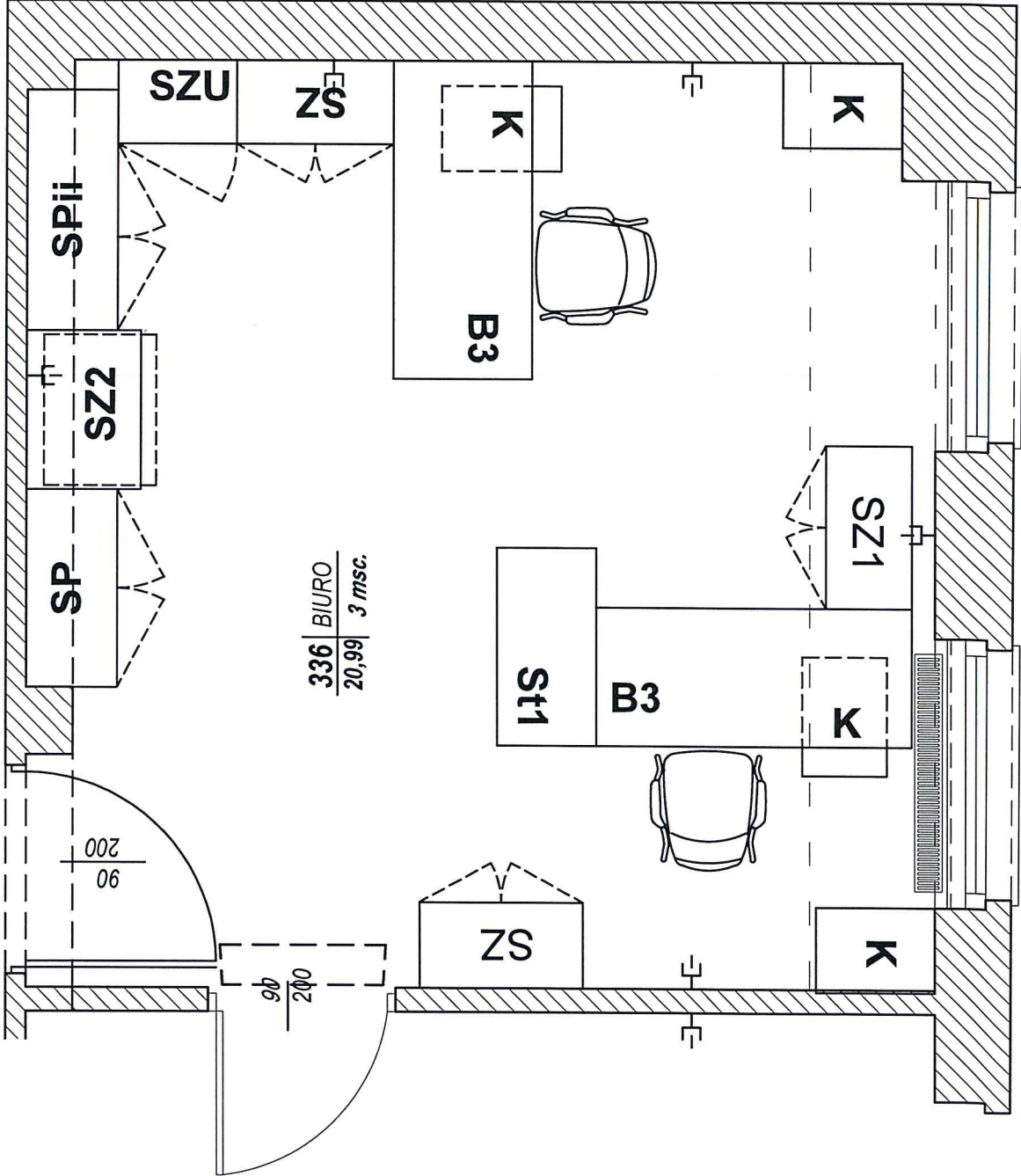
332 | BIURO
10,72 | 1 msc.







121
27



336 BIURO
20,99 3 msc.

